

# How to Guide - Zion Models

## Connecting & Disconnecting to City Water



## HOW TO: Potable Water Use

---

Your Roadtrek can operate in either fully self-contained mode or can be connected to a water supply such as a campsite's faucet.

The city water connection is under the rear bumper on the passenger side. Unscrew the black plastic protective cap and connect your clean hose to the water faucet and this connection point. Turn the faucet on and check for leaks, tightening the connections as necessary.



Campgrounds and municipalities vary greatly in supplied water pressure. The Roadtrek system has a regulator built in to help with the varied pressure.

In a typical campground you may see the faucet with a backflow preventer attached. These look like a pressure regulator but do not affect the pressure. The backflow preventer is there to protect the campground.



Backflow preventer



The SHURflo connector on your Roadtrek has a built-in pressure regulator

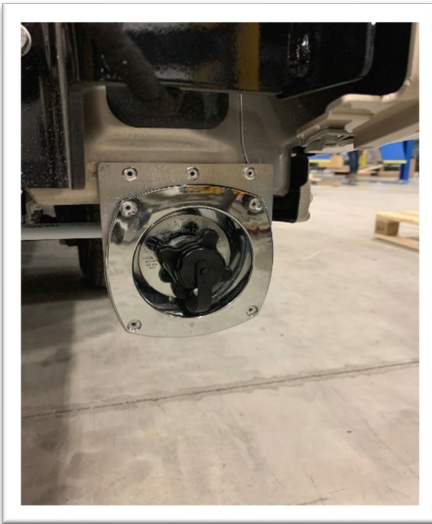


You can fill your tanks using the gravity fill.

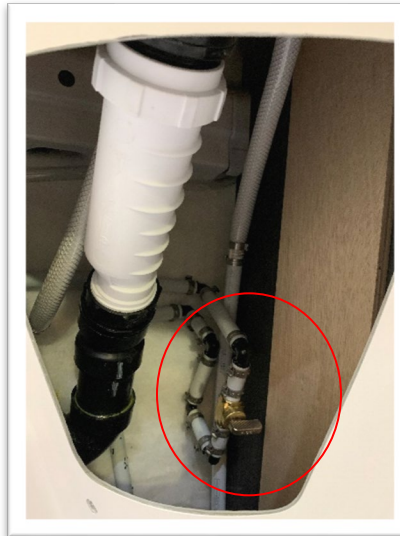
You can connect to a city water connection whenever your Roadtrek is not winterized. The city water inlet connection is on the passenger side, under the rear bumper.



Roadtrek recommends that you use a potable-water hose. These are usually white in color.



The city water fill is on the passenger side, under the rear bumper.



To use city water to fill your freshwater tank, you will need to open the valve which is located under the sink in the water closet.



The gravity feed to fill the freshwater tank is in the B pillar of the driver's side door frame.

### To connect the Roadtrek's water system to an outside source:

- Turn the water pump off.
- Close all interior faucets.
- Flush old water and any contaminants out of the water supply faucet.
- Connect your fresh-water hose to the faucet.
- Slowly open the faucet of the city water source.
- The city water connection by-passes the water pump and fresh-water tank. Therefore, the use of these items is not necessary when connected directly to an external watersource.

## To disconnect the city water connection:

- Turn off the external water source.
- Open a faucet to relieve the pressure in the system. Failure to do so will not damage your vehicle but may result in an unexpected shower when you disconnect the hose. The rear drain just behind the city water connection is a good place for this.
- Make sure the city tank fill valve is closed (handle vertical).
- Remove the hose from the city water connection and replace the cap on the fill connection.
- Disconnect the hose from the supply faucet and stow it in your storage compartment. Connecting the ends is a handy way to prevent dirt or other contaminants from entering the hose while stored.



If you hear your pump running and water pressure is low inside the vehicle after disconnecting from an external water source, it is because you have not properly positioned the city water valve. Make sure the silver handle on the city water valve, located under the sink in the water closet is vertical, and perpendicular to the water line when your water system is in self-contained mode.



Rear drain behind the city water connection.