



Roadtrek™®

Fuel Efficient Motorhomes
You'll Love to Drive!™®



210 Chevrolet Models Owner's Manual

including
Limited Warranty Information



Roadtrek™®
MOTORHOMES INC.

Introduction	A-0
Weight Ratings	A-1
Warnings and Cautions	A-2 - A-3 - A-4
Customer Service Procedures	A-5
Specifications, (Automotive/Motorhome)	A-6
Manufacturer Contact Information	A-7
Daily Living	B-0
Captain's Seats	B-1
Seat Belt Usage	B-1
Cloverleaf Dining Table	B-2
Dinette Table	B-3
Sleeping Facilities	B-4
Rear Twin Beds, (Popular)	B-4
Rear King Bed, (Popular) / Rear Queen Bed, (Versatile)	B-5
Front Lounge Seats	B-8
Bed Cushion Layouts	B-6
Bed Cushion Layouts	B-7
Permanent Bathroom	B-9
Powered Sofa, (Optional)	B-10
Washroom Facilities	B-11
Toilet	B-11
Stand-up Aisle Shower	B-11
Extra Counter Space	B-12
TV (Optional)	B-12
Exterior Access Doors	B-13
Driver Side Access Doors	B-13
Propane Access Panel	B-14
Passenger Side Access Doors	B-14
Auxiliary Battery	B-15
Replacing the Auxiliary Battery	B-15
Spare Tire Storage	B-16
Continental Spare Tire Kit (Optional)	B-16
Caution Note, (Mineralling)	B-16
Floor Plan & Appliance Location	C-1
Fresh Water System	C-1
Elevation, (210-Popular Chevrolet)	C-2
Floor Plan with Appliance Location, (210-Popular Chevrolet)	C-3
Elevation, (210-Versatile Chevrolet)	C-4
Floor Plan with Appliance Location, (210-Versatile Chevrolet)	C-5
Electrical System	E-0
Inverter/charger	E-1
10V Inverter Shut Down	E-1
Inverter/Charger Start up After Automatic Safety Shut Down	E-1
Dry Camping Battery Conservation	E-1
Receptacle Functionality	E-1
110V / 12V Inverter/Charger/Distribution Panel	E-2
External Electrical Source Connection	E-2
Generator (Optional)	E-2
Built-in 110 V Heat Pump/Air Conditioner	E-2
Monitor Panel	E-3
Auxiliary Battery and Isolator	E-4
Automotive Battery	E-4
Interior Cab Light	E-4
Water Heater	E-4
Rear Storage Light	E-4
Electrical System Legend	E-5
Electrical System Schematics	E-6 - E-7
Propane & Safety System	F-0 - F-1
Propane Tank	F-2
Appliances	F-2
Refueling Procedures	F-2
Regulator	F-2

Propane Leak Detector	F-3
Carbon Monoxide Leak Detector	F-3
Smoke Detector	F-3
Propane System Schematic, (210-Popular)	F-4
Propane System Schematic, (210-Versatile)	F-5
Water Systems	G-0
Winter Mode Valve Position	G-1
Winter Use	G-1
Summer Mode Valve Position	G-2
Water Systems, (Summer & Winter mode)	G-2
To De-Winterize	G-3
Fresh Water Tanks	G-4
Filling the Interior Fresh Water Tank	G-4
Filling the Exterior Fresh Water Tank	G-4
City Water Connection	G-5
Waste Water Storage and Dumping System	G-6
Waste Water Tank Preparation	G-6
Waste Water Tank Dumping	G-7
Waste Water Tank Flushing	G-8
Outside Shower	G-8
Potable Water System Draining	G-8
Potable Water System Sanitizing	G-9
Water System Winterizing	G-9
Water System Schematic, (210-Popular)	G-10
Water System Schematic, (210-Versatile)	G-11
Maintenance and Miscellaneous Information including Limited Warranty	H-0
Tire Fundamentals	H-1
UTQGS Information	H-2
Helpful Information	H-3 - H-4
Owner Maintenance	I-1
Fiberglass Maintenance	I-1
Exterior Washing	I-1
Other Maintenance	I-1
Winter Storage	I-1
Inside Your Vehicle	I-1
Outside Your Vehicle	I-1
Spring Start-Up	I-2
Tires	I-2
Cargo Carrying Capacity	I-2
Owner Maintenance Checks	I-2
When You Stop for Fuel	I-2
At Least Monthly	I-2
At Least Once Every Three Months	I-2
At Least Twice A Year	I-3
At Least Once A Year	I-3
Auxiliary Battery(s)	I-3
Aluminum Wheel Maintenance	I-4
Limited Warranty Information	J-0
Limited Warranty Definitions	J-1
Roadtrek Motorhomes Limited Warranty Registration Card	J-1
Automotive Warranty - General Motors, (Chevrolet Chassis)	J-1 - J-2
Limited Warranty Information	J-2
Automotive Customer Service & Roadside Assistance Phone Numbers	J-2
Appliance Warranties	J-2
Roadtrek Motorhomes Limited Motorhome Warranty	J-3 - J-4
Customer Assistance	K-1
Reporting Safety Defects, (U.S. Only)	K-1
Roadtrek Ambassador Potential Customer Referral Program for Roadtrek Owners	K-1
Roadtrek Club International	K-2
Address, Phone & Facsimile Numbers, and E-mail	K-2
Website	K-2
Roadtrek International Chapter FMCA / A Roadtrek Owners' Club Membership Forms	L-1
Change of Owner Name or Address Form	M-1 - M-2
Potential Customer Referral Card	M-3 - M-4

A WORD TO ROADTREK OWNERS...

This manual has been prepared to acquaint you with the operation, maintenance and warranties of your new **Roadtrek Motorhome Van**. Your vehicle has been designed, engineered and manufactured to provide you with the utmost in pleasure, dependability and quality. **It is important that you read the contents of this manual**, that of the Chevrolet chassis and those of other components, and follow the instructions and recommendations contained in each to help assure the most enjoyable and trouble free operation of your vehicle.

We would like to take this opportunity to thank you for selecting a **Roadtrek** product, and assure you of our continuing commitment to your recreational vehicle pleasure, safety and satisfaction.

INTRODUCTION

This manual has been written to provide you with the information required to properly operate and maintain your new Roadtrek. After reading this manual, be sure to keep it in your vehicle as a reference. Your **Roadtrek** dealer will be glad to answer any further questions about the operation of your vehicle.

IMPORTANT

Every reasonable precaution has been undertaken in the preparation of this manual, resulting in the utmost accuracy possible at the time of publication. However, due to the continuing improvement and refinement of our products and normal changes in information and procedures, Roadtrek Motorhomes shall assume no responsibility whatsoever for errors or omissions in the manual's contents.

Further, Roadtrek Motorhomes shall not be held liable or assume any obligations or responsibilities whatsoever for any loss, damage or injury directly or indirectly caused by, arising or resulting from, or as a consequence of the use or nonuse of the information contained herein or the operation or non-operation of any items mentioned herein. And finally, Roadtrek Motorhomes shall be indemnified and saved harmless from all losses, expenses, claims and demands whatsoever.

WEBSITES OF INTEREST

www.roadtrek.com

www.rvbasics.com

www.rvrepairmanual.com

www.rvhelpdesk.com

www.funroads.com

www.gasbuddy.com

www.allcampgrounds.com

Weight Ratings

Gross Vehicle Weight Rating, (GVWR): is the maximum permissible weight of this vehicle when fully loaded. It includes all weight at the vehicle axle(s).

Unloaded Vehicle Weight, (UVW): is the weight of this motorhome as manufactured at the factory. It includes all weight at the vehicle axle(s). If applicable, it also includes full generator fluids, including fuel, engine oil and coolants.

Cargo Carrying Capacity, (CCC): is equal to GVWR minus each of the following: UVW, full fresh, (potable) water weight, (including water heater), and full propane weight and SCWR.

Gross Combined Weight Rating, (GCWR): means the maximum allowable loaded weight of this motorhome and any towed trailer or towed vehicle.

Canadian Models - Seating Capacity Weight Rating, (SCWR): is the manufacturer's designated number of seating positions with a seat belt multiplied by 154 pounds, (70 kilograms).

US Models - Sleeping Capacity Weight Rating, (SCWR): is the manufacturer's designated number of sleeping positions multiplied by 154 pounds, (70 kilograms).

Gross Axle Weight Rating, (GAWR): is the value specified as the load carrying capacity of a single axle system, as measured at the tire-ground interfaces.

Towing Guidelines: Consult Chevrolet Owners Manual(s) for specific weighing instructions and towing guidelines, including auxiliary brake requirements for any towed trailer or towed vehicle.

Weighing Procedure: Prior to weighing each unit, the fuel tank must be full, as well as the fresh water tanks. All tires must be of equal pressure, and any snow must be removed.

Note: the weighing must be done on level ground!

Equipment: 2 Portable Scales, (including electrical power source), 2 wooden ramps, lift and pressure gauge.

Alternate: D.O.T. approved customer scales or 4 portable scales.

Note: Wooden ramps must be equal to or less than 1/8" of the height of the scales being used.

Procedure:

- 1) Fill Fuel Tank
- 2) Fill Fresh Water Tanks
- 3) Fill Propane Tank
- 4) Measure all tire pressures and equalize if necessary
- 5) Place wooden ramps below rear wheels, (using lift or driving onto ramps for levelling the vehicle; N/A if commercial scales or 4 portable scales used)
- 6) Place scales under the front wheels
- 7) Record scale readings
- 8) Repeat steps 4-6 for the rear wheels

THIS VEHICLE WAS ALTERED BY: **Roadtrek**™ MOTORHOMES INC. AS ALTERED IT CONFORMS TO ALL APPLICABLE U.S. FEDERAL MOTOR VEHICLE SAFETY, BUMPER AND THEFT PREVENTION STANDARDS AFFECTED BY THE ALTERATION AND IN EFFECT IN: Jan-07 (Date of Manufacture) Model: 21PC SS: 81614 VIN: 1GCHG39U6 71159082

TYPE OF VEHICLE: MPV CLASS B MOTORHOME

MOTORHOME WEIGHT INFORMATION		Lb	Kg
WARNING: CONSULT OWNER MANUAL(S) FOR SPECIFIC WEIGHING INSTRUCTIONS & TOWING GUIDELINES			
GVWR		9600	4,354
MINUS UVW		8250	3,742
MINUS FRESH & HW WT (30 + 6) GALLONS @ 8.3 lb/gal		300	136
MINUS PROPANE WT OF 8 GALLONS @ 4.2 lb/gal		34	15
MINUS SCWR OF 2 PERSONS @ 154 lb/person		308	140
MINUS TOTAL FACTORY SUPPLIED OPTION WT		295	134
CCC FOR THIS MOTORHOME		413	187

GCWR (GROSS COMBINED WT RATING): THE MAX. ALLOWABLE LOADED WT OF THIS MOTORHOME & ANY TOWED TRAILER OR TOWED VEHICLE
 UVW (UNLOADED VEHICLE WT): THE WT OF MOTORHOME AS MANUFACTURED AT THE FACTORY WITH FULL FUEL, ENGINE OIL & COOLANTS
 SCWR (SLEEPING CAPACITY WT RATING): THE MANUFACTURER'S DESIGNATED NO. OF SLEEPING POSITIONS X 154 POUNDS (70 KILOGRAMS)
 CCC (CARGO CARRYING CAPACITY) = GVWR - (UVW+FULL FRESH/POTABLE WATER WT(INCLUDING HOT WATER)+FULL LP-GAS WT+ SCWR)

	GAWR	TIRES	RIMS	COLD INFL. PRESS.	SINGLE	DUAL
FRONT	4300 lb (1951 kg)	LT245/75R16-E	16 x 6.5J	50 PSI (340 kPa)	X	
REAR	6084 lb (2740 kg)	LT245/75R16-E	16 x 6.5J	80 PSI (550 kPa)	X	

Paint Identification: Upper body paint code: GM-WA929L Lower body paint code: GM-WA900J Backout paint code: N/A

Sample of US Weight label:

THIS VEHICLE WAS ALTERED BY / CE VEHICULE A ÉTÉ MODIFIÉ PAR: **Roadtrek**™ MOTORHOMES INC. Date: 16 Feb 07

VEHICLE MANUFACTURED BY/VEHICULE CONSTRUIT PAR: GENERAL MOTORS CORPORATION Date: 15-Nov-06 Model: 21PC

GVWR/PNEU: 4355 Kg VIN/NIV: 1GCHG39U3 71166314

TYPE: MPV/VTUM SEATING CAPACITY / NOMBRE DÉSIGNÉ DE PLACES ASSISSES: (2 x 70) = 140 Kg

GAWR/PNEU (KG)	TIRE/PNEU	RIM/JANTE	COLD INFL. PRESS. / PRESS. DE GONFL. À FROID	PSI/LPC	KPA
FRONT	1951	LT245/75R16-E	16 x 6.5J	50	340
REAR	2780	LT245/75R16-E	16 x 6.5J	80	550

CARGO CAPACITY	246 (kg)	CAPACITÉ DE CHARGEMENT	246 (kg)	50
CALCULATED WITH FRESH WATER TANKS FULL:		CALCULÉE AVEC LES RÉSERVOIRS D'EAU DOUCE PLEINS:		8
(COLD)	114 (kg)	(FROID)	114 (kg)	9
(HOT)	23 (kg)	(CHAUD)	23 (kg)	5
AND THE WASTE WATER TANKS EMPTY		ET LES RÉSERVOIRS D'EAUX USÉES VIDES		6
WASTE WATER TANKS CAPACITY	129 (kg)	CAP. DES RÉSERVOIRS D'EAUX USÉES	129 (kg)	00033501 Rev D

Paint Identification: Upper body paint code: GM-WA929L Lower body paint code: GM-WA900J Backout paint code: N/A

Sample of Canadian Weight label:

WARNINGS AND CAUTIONS

This manual contains **WARNINGS** against operating procedures which could result in an accident or bodily injury.

The manual also contains **CAUTIONS** against procedures which could result in damage to your vehicle.

If you do not read the entire manual you may miss important information. Observe all Warnings & Cautions.

WARNINGS:

SEAT BELTS:

Only forward facing seats equipped with factory installed seat belts are to be occupied while the vehicle is in motion. All passengers must be seated in these seats only, with the seat belts fastened while the vehicle is in motion.

PROPANE:

Propane tanks shall not be placed or stored inside your vehicle. Propane tanks are equipped with safety devices which relieve excessive pressure by discharging gas into the atmosphere.

To reduce the danger of fire or explosion, do not store gasoline or other flammable liquids inside your vehicle. Ensure that you purchase propane from a reputable propane facility. Contaminated propane is a common cause of system failure.

Do not refuel the propane tank to more than 80% of its capacity.

The propane tank valve must be closed and ALL PILOT LIGHTS, APPLIANCES, AND THEIR IGNITERS, (see Operating Instructions) MUST BE TURNED OFF during refueling of motor fuel tank and/or the Propane fuel tank. Only qualified personnel should refuel your propane tank.

APPLIANCES:

It is not safe to use cooking appliances for space heating purposes due to the danger of asphyxiation.

The propane stove needs fresh air for its safe operation.

Portable fuel burning equipment, including wood or charcoal grills and stoves, should **NOT** be used inside your vehicle. Use of this type of equipment inside your vehicle may cause fire or asphyxiation.

PROPANE LEAK DETECTOR:

Do not block air circulation in the area where the Propane Leak Detector is located.

The battery disconnect switch, (located on the monitor panel above the passenger side lounge seat) must be in the "ON" position for the propane detector to function.

CARBON MONOXIDE LEAK DETECTOR:

Do not block the air circulation in the area where the carbon monoxide leak detector is located.

Battery disconnect switch must be in the "ON" position for the Carbon Monoxide Leak Detector to function.

110 VOLT ELECTRICAL SERVICING:

Prior to servicing the 110 volt Galley GFCI & Audio/Video cabinet interior receptacles, unplug the output lead from the power inverter.

EXTERIOR ACCESS DOORS:

Ensure that the power cord and city water line are disconnected and in their stored positions before the vehicle is put in motion.

CAUTIONS:

CLOVERLEAF DINING TABLE:

Cloverleaf dining table is heavy, bend your knees while lifting.

EXTRA COUNTER SPACE:

Make sure the stove is off and has cooled prior to covering the stove.

TV:

When the vehicle is in motion it is recommended that the TV be "OFF" and in the stored position. The T-handle should be engaged to secure the TV in the stored position.

The flat screen TV, (option TF) should not be stored inside the Roadtrek in temperatures below -4°F, (-20°C). The operating temperature of the monitor is recommended between 50°F & 104°F, (10°C – 40°C) with a humidity range of 10%-80%, non condensing.

To remove the TV, remove the four mounting bolts on the back of the TV mounting bracket and disconnect the RCA cables, power supply cable and antenna cable.

AUXILIARY BATTERY:

Battery acid can burn skin and damage clothing. Protective eye wear and gloves should be worn when handling batteries.

REPLACING THE AUXILIARY BATTERY:

Ensure that the inverter/charger is disconnected and battery disconnect is in the off position prior to disconnecting the auxiliary battery.

GENERATOR:

When launching a boat, using your Roadtrek, it is important to know that the generator must not be submerged in water. When using the generator as the main power source to run the appliances, refer to the generator owners manual for proper use and maintenance.

WASTE WATER STORAGE AND DUMPING SYSTEM:

Ensure that both the black and gray water gate valves are closed, (inward position) before using the waste water system.

Under moderate subfreezing conditions, antifreeze is required in the exterior fresh water tank, black and gray waste water tanks. Antifreeze should be used at a 50% water and 50% antifreeze ratio.

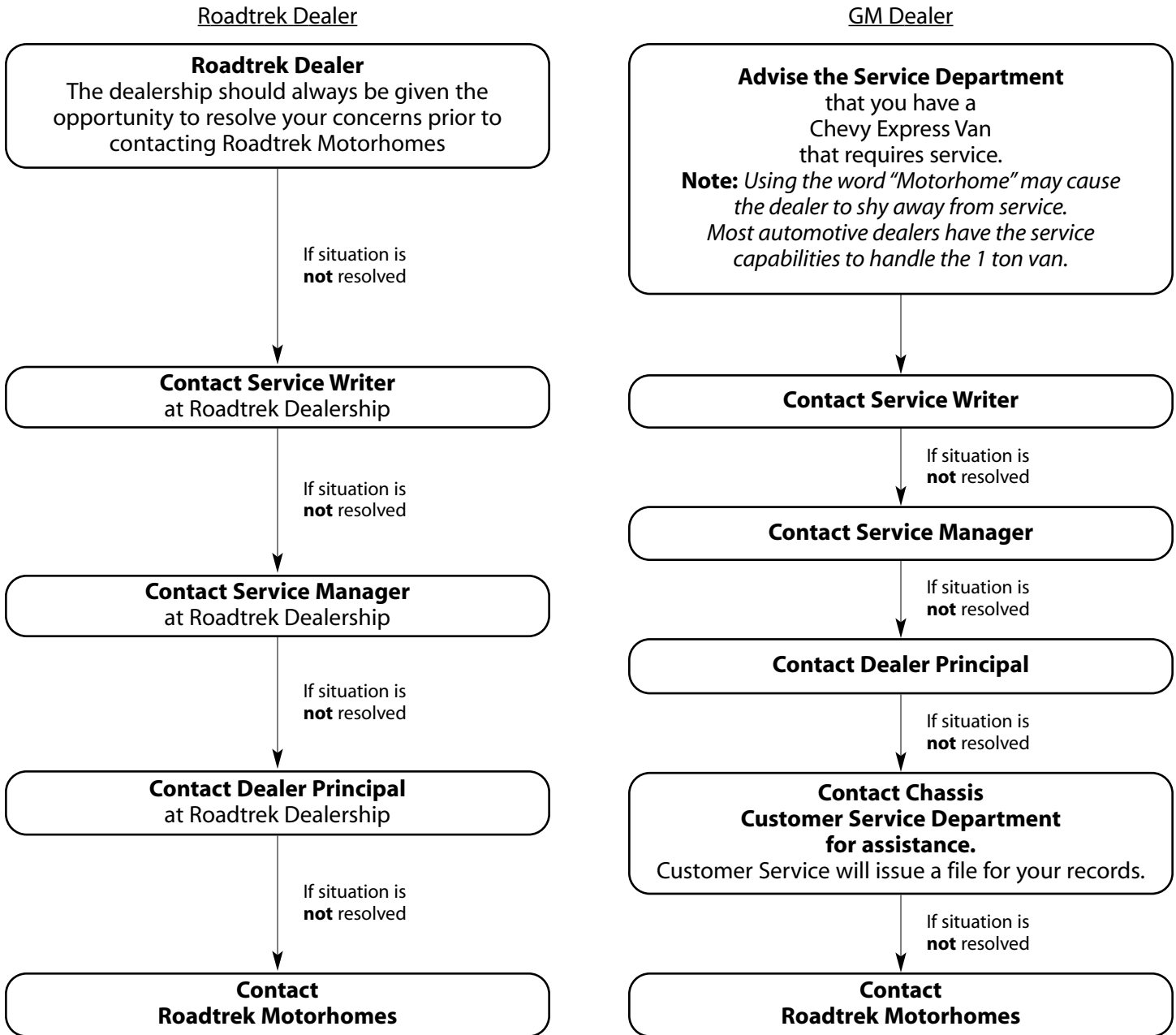
VEHICLE ROAD CLEARANCE:

Your vehicle is equipped with underside water and waste tanks and drainage system, etc. Be mindful of road clearances especially in campgrounds and poorly maintained roadways.

THE WARNINGS AND CAUTIONS IN THIS QUICK REFERENCE ARE AN OVERVIEW AND THERE ARE MORE NOTES AND INSTRUCTIONS WITHIN THIS MANUAL.

OBTAINING MOTORHOME SERVICE

The solution to all your Roadtrek concerns starts with your Roadtrek Dealer



2007/06 STANDARD AND OPTIONAL AUTOMOTIVE FEATURES

Air bag - driver & passenger	with passenger on/off switch
Alternator	145 amp.
Axle - rear	4.10 ratio, (w/optional locking diff., trans. cooler)
Battery	600 amp.
Brakes - anti lock (ABS)	four wheel disc
Bumper Covers	optional, front & rear
Continental spare tire kit	optional, available
Cooling - transmission oil	internal
Cruise Control	standard
Defroster - rear window	standard
Door locks - with remote	power - all doors, single key
Doors & exits	wide side & 50/50 rear
Engine	6.0 L SFI gas V8
Fuel capacity	117 L/31 US gal.
LX Package	optional, sand paint w/charcoal lower body
Mirror - interior	compass & exterior temperature
Mirrors - exterior	power, heated
Power	223 kW/300 HP
Receiver	Class IV
SE package	optional, silver paint w/grey lower body, & silver dash trim
Seat belts in rear	optional, std. for 2 on 210 Versatile (U.S. only), (replaces night table on 210 Popular)
Seats - Cab - Captain's	swiveling, reclining, power lumbar supports & dual armrests
Seats - leather - faux	optional, captin's & lounge seats
Sofa - rear - electric power	optional, std. on 210-Versatile, w/2 seat belts (0 in Canada, converts to bed[s])
Sound system	AM/FM & CD
Striping - Minimalist	available (replaces std. graphics)
Tilt Steering	standard
Tire storage - spare	rear storage area
Tires	LT245/75R16E black wall
Torque	490 N-m/360 ft. lbs.
Trim - real maple wood	dash & front door panels
Wheel covers	chrome look
Window operation	power - front doors only
Wheels - polished chrome look	optional, 16" - with steel spare
Wheels - steel	16" - with trim, (opt. aluminum, w/steel spare)
Window tint	deep tinted - all
Wiring harness for towing	4 & 7 way (brake controller not included)

2007/06 EXTERIOR DIMENSIONS

Length	6680mm/21' 11" (1)
Height - overall	2590 mm/8' 6"
Width - overall (w/o mirrors)	2240 mm/7' 4"
Wheel base	3940 mm/155"
Unloaded vehicle weight (3)	3700 Kg/8100 lbs.
Gross vehicle weight rating	4355 Kg/9600 lbs.
Gross combined weight rating (4)	7258 kG/16000 lbs.
Towing - tow weight (5)	3400Kg/7500lbs.
Towing - tongue weight (6)	454 kg/1000 lbs.

(1) Add 250 mm/10" if equipped with optional Continental spare tire kit.

(2) Includes 10" for Continental spare tire kit.

(3) Includes weight of base vehicle and fuel only. Does not include weight of optional equipment, water, propane, cargo and/or passengers.

(4) GCWR includes total weight of vehicle, trailer, equipment, fuel, water, propane, cargo, driver and passengers.

(5) Maximum towable weight with driver only. This weight reduced by weight of optional equipment, fuel, water, propane, cargo and/or passengers.

(6) A weight distributing hitch is required for tongue weights over 200 Kg/400 lbs.

2007 INTERIOR DIMENSIONS

Standing height	1880 mm/74"
Rear king bed length	1930 mm/76" (maximum)
Rear king bed width	2030 mm/80" (maximum)
Rear double or queen bed length	2030 mm/80"
Rear double or queen bed width	1520 mm/60"
Rear twin bed length - left, right	1930 mm/76", 1830 mm/72"
Rear twin bed width	760 mm/30"
Front single bed length - left, right	1575 mm/62", 1660 mm/65"
Front single bed width	560 mm/22" (maximum)
Water tank - fresh	115 L/30 US gal.
Water tank - grey	85 L/23 US gal.
Water tank - black	40 L/10 US gal.

2007/06 STANDARD MOTORHOME FEATURES

Air Conditioner - 110	'Dometic' recessed air conditioner & heat pump, 12000 BTU
Aisle	26"/660 mm wide
Awning - box - 'Fiamma'	3500mm/11'6"
Bathroom	permanently enclosed w/vanity sink & sit-down, stand-up shower in aisle
Battery - auxiliary - 12V	lead acid deep cycle, 95 amp-hrs.
Battery storage - auxiliary	slide-out tray below floor
Beds - dual density foam	130 mm/5"
Carpet	40 oz. 100% Dupont nylon
Connection - auxiliary - Propane	for BBQ w/quick disconnect
Connection - external - 110V	standard w/detachable power cord
Connection - external - TV cable	standard
Connection - external - water	standard with quick disconnect
Counter top	solid surface
Detectors	smoke, Propane & CO
Faucet - galley	single lever
Floor - lowered	2025 mm x 890 mm x 50 mm/80" x 35" x 2"
Furnace - 'Suburban'	Propane automatic, 16000 BTU
Generator ready package	for gasoline 'Onan'
Home theatre system with 5.1 surround sound, dual centre speakers	with DVD, CD, AM/FM radio, dual use rear speakers
Microwave oven - 110V	convection, 28L/1.0 cu ft., 1800 W convection/1000 W micro (210-popular); 20 L/0.7 cu. ft., 700 W (210 Versatile)
Monitor panel	water & Propane levels, battery charge & battery disconnect
Power inverter with charger - 12/110V	750W, w/3 step 45 amp. charger (w/remote on/off switch)
Propane tank	38 L/10 US gal./45 lbs.
Refrigerator - 'Dometic' - 12V/110V/Propane	4.0 or 5.0 cu. ft. with automatic source selection
Roof vent - 'FanTastic' - 12V	low profile power w/thermostat
Sewage disposal system - 12V	macerator sewage pump
Shower	stand-up in aisle
Sink	with stainless steel flush cover
Storage area	across the rear with trunk
Storage capacity	74 cu. ft., 81 w/options
Storage compartments - exterior	3 drawers below floor
Stove - two burner - Propane	recessed w/flush cover
Table - dining	front and rear
Toilet - 'Thetford'	marine with foot pedal flush
TV Antenna	'Winegard' crank-up
Water fill - fresh - location	front & rear door posts to reduce clutter & prevent tampering w/supply
Water heater - 'Suburban'	Propane w/bypass 23L/6 US gal., 12000 BTU
Water system - on demand	12V with 'Shurflo' water pump
Water tank capacities	(see Interior Dimensions)
Windows	frameless awning type
Windows - roof	3 frameless with removable panels

2007 MOTORHOME OPTIONS

Armoire - with adjustable shelves & drawers	replaces right lounge seat
Battery - second auxiliary	two lead acid deep cycle, 6V, 220 total amp-hrs. (repl. 12V)
Coffee maker	110V
Delete box awning	available
Delete TV antenna	available
Generator - 'Onan MicroLite'	gasoline, remote-start, 2.8 kW
Mattresses - folding	for front lounge seats
Pantry - hanging	beside galley towards rear
Permanent Bathroom	optional, with vanity and sink
Screen package	for side van door window and side & rear door openings
TV - flat screen	17" & 19" with remote
TV antenna	optional, 'Winegard' crank-up
Wardrobe - removable	interchangeable with left lounge seat

MANUFACTURER CONTACT INFORMATION:

Component	Manufacturer	Location	Phone Number
Awning	Fiamma	Orlando, FL	407-672-0091
Battery	Trojan	Santa Fe Springs, CA	800-423-6569
Detector-carbon monoxide	MTI Industries	Wauconda, IL	800-383-0269, 847-546-9001
Detector - Propane	MTI Industries	Wauconda, IL	800-383-0269, 847-546-9007
Flat LCD T.V.	Aralex Acoustics Ltd	Coquitlam, BC	306-221-7610
Furnace, (U.S.)	Suburban Mfg.	Elkhart, IN	423-775-2131
Furnace, (Canada)	Suburban c/o GL Products	Oakville, ON	905-845-7558
Generator, (U.S.)	Onan Corporation	Minneapolis, MN	800-888-6626
Generator, (Canada)	Onan Corporation	Oakville, ON	905-795-0050
Heat Pump	Dometic	Elkart, IN	800-544-4881
Inverter/Charger	Tripp-Lite	Chicago, IL	773-869-1234
Macerator Pump, (U.S. & Canada)	SHURflo, LLC	Cypress, CA	800-854-3218
Microwave, (U.S.)	Dometic Corporation	Elkhart, IN	800-544-4881
Microwave, (Canada)	Dometic Distribution	Cambridge, ON	800-544-4881
Refrigerator, (U.S.)	Dometic Corporation	Elkhart, IN	800-544-4881
Refrigerator, (Canada)	Dometic Distribution	Cambridge, ON	800-544-4881
Roof Vent - Power	FanTastic Vent	Capac, MI	810-724-3818
Screens, (for van doors)	Bug Barrier	Medina, OH	800-548-0214, 330-723-2551
Toilet, (U.S.)	Thetford Corporation	Ann Arbor, MI	800-521-3032
Toilet, (Canada)	Thetford Sanitation	Mississauga, ON	905-671-0255
TV Antenna	Winegard	Burlington, IA	800-288-8094
Water Heater, (U.S.)	Suburban Mfg.	Elkhart, IN	423-775-2131
Water Heater, (Canada)	Suburban c/o GL Products	Oakville, ON	905-845-7558
Water Pump, (U.S. & Canada)	SHURflo, LLC	Cypress, CA	800-854-3218
Wheels - Aluminum(SE)	Prime Wheel	Gardena, CA	310-516-9126
Wheels - Aluminum	American Racing	Mississauga, ON	800-959-1969

Daily Living

CAPTAIN'S SEATS:

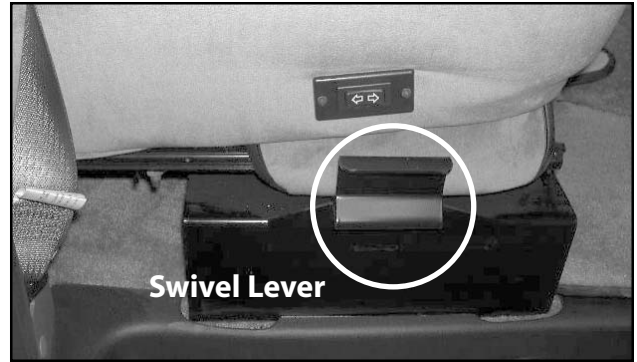
To recline, pull up the recline control lever below the inboard armrest and lean back.

To slide, pull up on the slide bar located on the front of the seat and slide the seat either forward or back, (see Picture B-P1a).

To swivel the seats from a forward facing position to a rearward facing position, pull the swivel lever up, (see Picture B-P1).

Important Note: Before swiveling the seat, you must be aware of the following:

1. Ensure that the back of the seat is reclined forward, as far as the recline control allows.
2. Slide the seat forward but not so far as to lose clearance of the engine cover. Pull up on slide bar, (see Picture B-P1A).
3. Put the tilt steering wheel in the most downward position.
4. The swivel lever is located on the door side of the seat and locks the seat in a forward facing position. To release pull the swivel lever up and the seat freely swivels, (see location on Picture B-P1).
5. Swivel the seat to the desired position, (see Picture B-P2).



Picture B-P1: View of front captain's seat showing the location of the swivel lever.



Picture B-P1A: View of the front of the Captain's seat, showing the location of the slide bar.



Picture B-P2: Captain seats swiveled towards the rear of the Motorhome.

SEAT BELT USAGE:

Only forward facing seats equipped with factory installed seat belts are to be occupied while the vehicle is in motion. All passengers must be seated in these seats only, with the seat belts fastened while the vehicle is in motion.

CLOVERLEAF DINING TABLE:

210-Popular:

The cloverleaf dining table has been replaced with a pull out extendable table, (see Picture B-P3). Grasp the table firmly and pull it straight out. To restore it, push it straight back.

210-Versatile:

The cloverleaf dining table and cloverleaf table are stored in the wardrobe, (see Picture B-P4A). Remove table leg from storage beside driver side lounge seat, (see Picture B-P4B), (see Picture B-P4A) and place it in the floor base receptacle located beside the lounge seats. Place the table top on top of the table leg.

To use the table “leaves”:

1. Pivot the table into the desired position.
2. In the seated position, with one hand on the top of the table, use the other hand to unfold the desired leaf to the upright position.

To return the “leaf” to it original position, use the following steps:

1. Hold the leaf with one hand.
2. With the other hand reach under the table and carefully press on the center of the downward facing part of the spring hinge.
3. Fold the leaf back into the stored position.

Caution: Cloverleaf dining table is heavy, bend your knees while lifting.



Picture B-P3: Lower galley cabinet showing location of cloverleaf table, (Popular model).



Picture B-P4:

Picture B-P4A

Cloverleaf table has been replaced with pull out extendable table and Dinette table leg is stored in passenger side upper rail shelf, (Popular model).



Picture B-P4B: Cloverleaf table leg is stored beside the driver side lounge or captain seat. (Versatile model).

DINETTE TABLE:

The table leg is stored in the passenger side upper rail shelf, Popular model, (see Picture B-P4, page B-2) Versatile model, (see Picture B-P4A). Remove the table leg and place it into the floor base receptacle located in the rear on the floor.

The table top is stored under the driver side rear bed cushion, (see Picture B-P6). Place the table top on the top of the table leg, (see Picture B-P5).

When returning table top to the storage position ensure the table base is placed correctly into the table base receptacle, located on top of the rear driver side bench, (see Picture B-P6). Return the table leg to the proper location and clip into place for proper storage.



Picture B-P5: Location of assembled dinette table, (Popular model).



Picture B-P6: Storage location of dinette table, with the table leg base facing downward.



Picture B-P5A: Location of assembled dinette table, (Versatile model with power sofa).

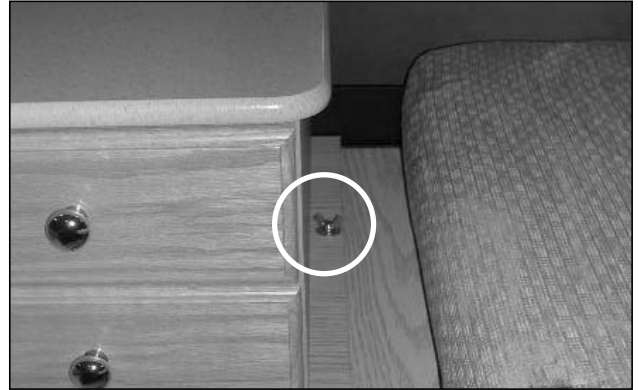
SLEEPING FACILITIES:

REAR TWIN BEDS, (Popular Model):

To convert the dinette into twin beds:

1. Remove the table and leg from its receptacle and place the table under the driver side seat cushion and store table leg.
2. Place both back rest cushions on the floor vertically up against the seat base boxes or store if desired.
3. Pull each seat cushion 3", (8 cm) from the wall to provide additional elbow room while sleeping.
4. Night table can be removed, (see Picture B-P7) and stored if desired.

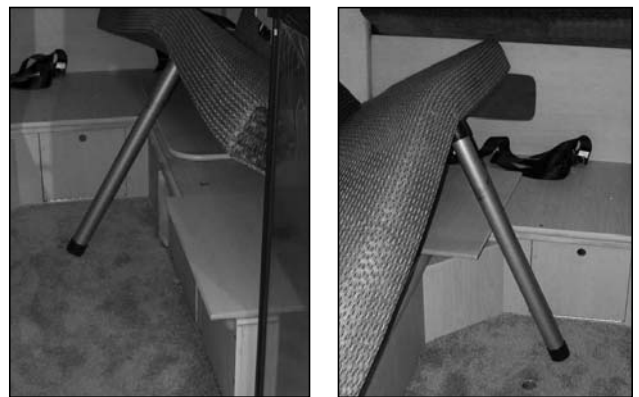
To convert back to a dinette, perform these steps in reverse order.



Picture B-P7: Wing bolts attaching the night table, are accessed from the sides of both the night table as illustrated above, (Popular model).



Picture B-P8: Placement of the seat cushions for Twin beds, (Popular model).



Picture B-P9: Storage of the bed supports for the King size, (Popular model).

REAR KING SIZE BED, (Popular Model)

To convert the dinette into a King size bed:

1. Remove the table and leg from its receptacle.
2. Remove night table and store. In order to remove, unscrew the wing nut found on each side of the night table, (see Picture B-P7). Store wing nut in the night tables drawer when not in use.
3. Place table top in storage, (see Picture B-P6).
4. Remove bed support from storage located under bed base on driver side, (see Picture B-P9).
5. Install bed support, Popular Model, (see Picture B-P10).
6. Slide both bottom cushions together so that they meet in the middle, (see Picture BP-11).
7. Place both back rest cushions on sides, (see Picture B-P12). **NOTE:** The longer back rest cushion must be placed on the driver side to provide clearance for the bathroom door.
8. Push down the back rest cushions so they lay flat to create the King size bed.
9. Install filler cushions, (see Pictures B-P12 & 13).

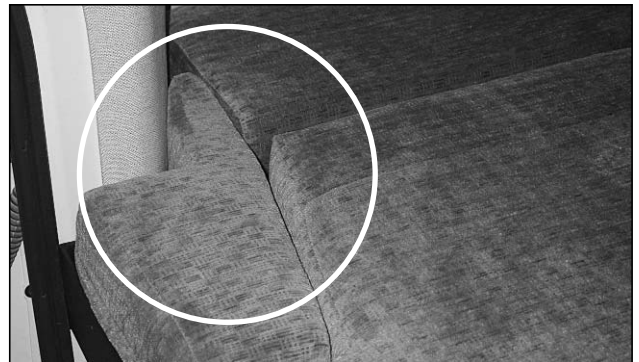
To convert back to a dinette, perform these steps in reverse order.



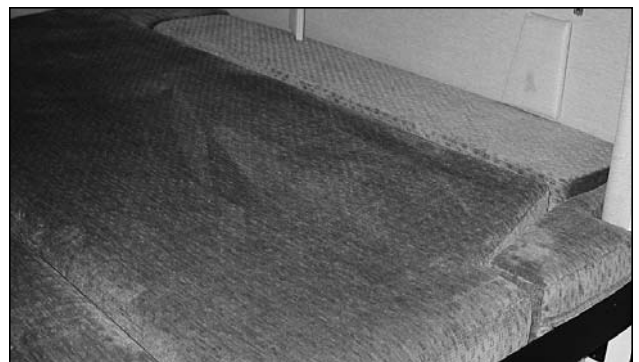
Picture B-P10: Placement of supports for the King size bed, (Popular Model).



Picture B-P11: Lay cushions flat.



Picture B-P13: Placement of filler cushion.



Picture B-P12: Placement of back rest cushions.

FRONT LOUNGE SEATS:

To convert the lounge seat into a single bed:

1. Be sure all armrests are in an upright position. Swivel the captain's seat 270 degrees clockwise so that the backrest is toward the center aisle, (see Picture B-P14).
2. Remove the lounge seat back and place the optional folding mattress hard side down between the lounge seat base and captain seat base. Unfold the mattress and arrange to fit as necessary. (See Pictures B-P16 and B-P17).

To convert back to a lounge seat, perform these steps in reverse order.

The lounge seat(s) is designed to carry a passenger while your vehicle is in motion, and is equipped with seat belts installed for their protection. All passengers must be seated in the front captain's seats facing forward or the passenger lounge seat with seat belts fastened while the vehicle is in motion. All other seats are not to be occupied while the vehicle is in motion. The lap belts must be worn across the hips and not across the abdomen. Passengers must sit well back in the seat and in an upright position.



Picture B-P14: Swiveled front captain seat.

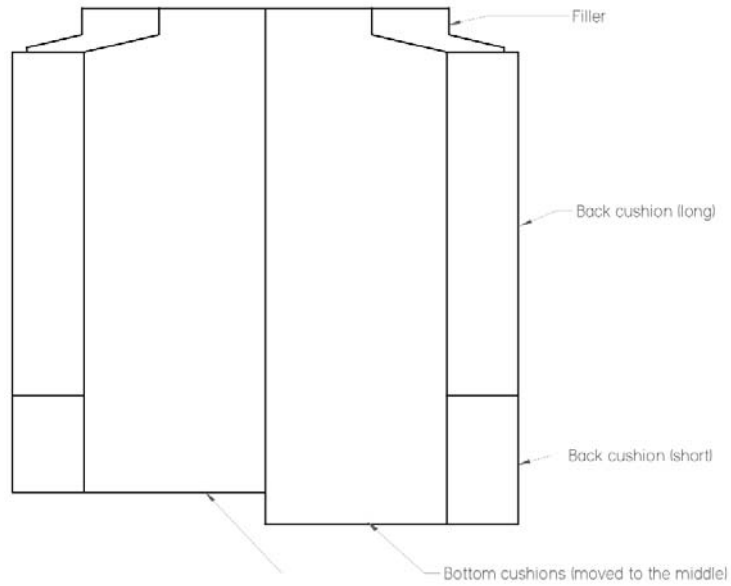


Picture B-P16: As viewed through passenger front door.

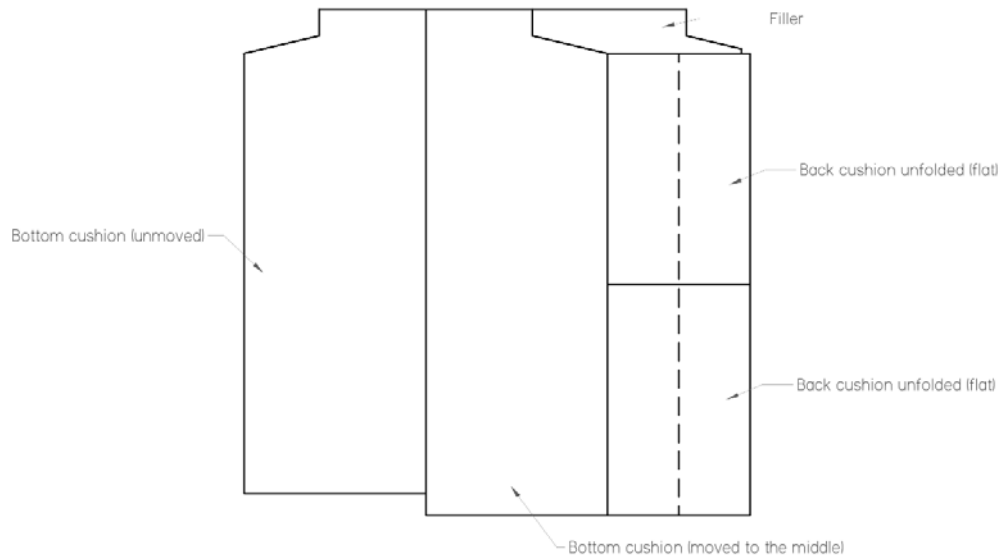


Picture B-P17: Front lounge bed.

Back of Motorhome - Top View

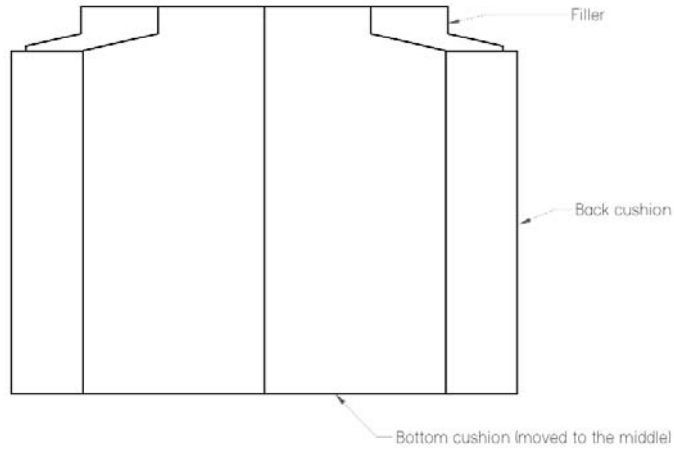


Back of Motorhome - Top View

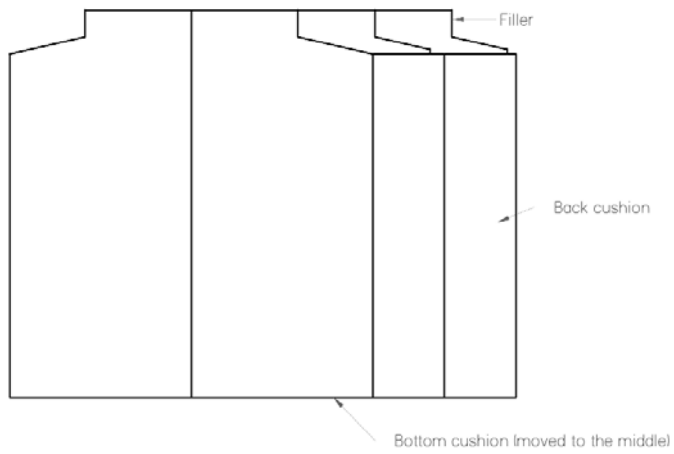


210-Popular Chevrolet Bed Layout

Back of Motorhome - Top View



Back of Motorhome - Top View



210-Versatile Chevrolet Bed Layout (up to mid-2006)

PERMANENT BATHROOM SHOWER USAGE

The door of the permanent bathroom is held open for shower usage by a strap and a snap in the Versatile (See Picture B-P18), or by a plastic bar in the Popular (see Picture B-P19) which hooks behind the microwave oven cabinet. Once in place, the shower curtain is pulled all the way out of the bathroom and fastened in place at the door openings using the hook and loop fasteners on the door edges (See picture B-P20). The shower nozzle can be turned to spray out into the enclosed area (Picture B-P21), or hand held.



Picture B-P18



Picture B-P19



Picture B-P20

Bathroom vent fan usage

The bathroom vent is opened by pushing upward on the handle (Picture B-P22). Once opened the red switch button is depressed until it clicks to turn on the fan. Closing the vent is achieved by pulling down on the handle (Picture B-P23) after turning off the fan.

Toilet Tissue holder

The toilet tissue holder is located inside the top shelf of the sink base to keep it dry when not needed (Picture B-P24).

Bathroom Electrical Outlet

There is a 110 Volt electrical outlet in the upper inboard rear corner of the bathroom enclosure (Picture B-P25). Although this is a GFCI-protected outlet, it is always advisable to use caution when using appliances in wet environments.



Picture B-P21



Picture B-P22



Picture B-P23



Picture B-P24



Picture B-P25

POWERED SOFA, (Optional on 210-Popular, Standard on 210-Versatile):

The powered sofa is operated using a bi-directional switch located on the side of the cabinet in the rear of the unit (Picture B-P26). By depressing the top of the switch, the sofa will be lowered. By depressing the bottom of the switch, the sofa will be raised. This circuit is protected by an automatically resetting 30 Amp. breaker located in the compartment with the inverter (Red wires with yellow end caps in picture B-P26A).

The setup of the bed is very simple for this item and is best explained by the pictures below.

Versatile Units:

1. Lower the sofa into place.
2. Place the bed support located at the side of the rear passenger side cabinet (picture B-P27) into the opening (picture B-P27A).
3. Place the back rest cushions from both side Ottoman seats together on the support (Picture B-P27B).

Popular Units:

1. Lower the sofa into place.
2. The dinette table located under the driver side Ottoman seat (See picture BP-28) is used for the bed support (Picture B-P28A).
3. The passenger side Ottoman seat bottom cushion is moved onto this support (picture B-P28B), and the driver side backrest is opened out to fill the space against the passenger side wall.



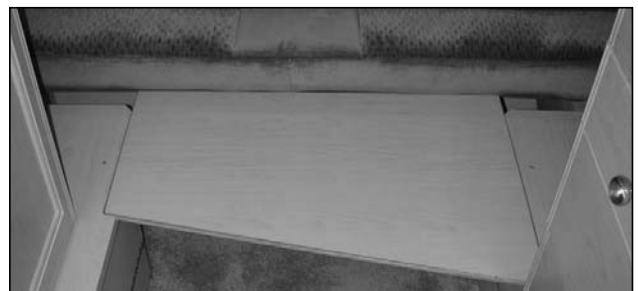
Picture B-P27: Bed support storage (Versatile units)



Picture B-P26: Power sofa switch



Picture B-P26A: Power Sofa 30A breaker



Picture B-P27A: Bed support in place (Versatile Units)



Picture B-P27B: Position of cushions for bed (Versatile Units).



Picture B-P28: Location of Dinette table/bed support (Popular Units).



Picture B-P28A: Table in place as bed support (Popular units).



Picture B-P28B: Completed bed (Popular units).

WASHROOM FACILITIES:

TOILET:

1. Privacy is achieved by closing the Permanent Bathroom door.

STAND-UP AISLE SHOWER:

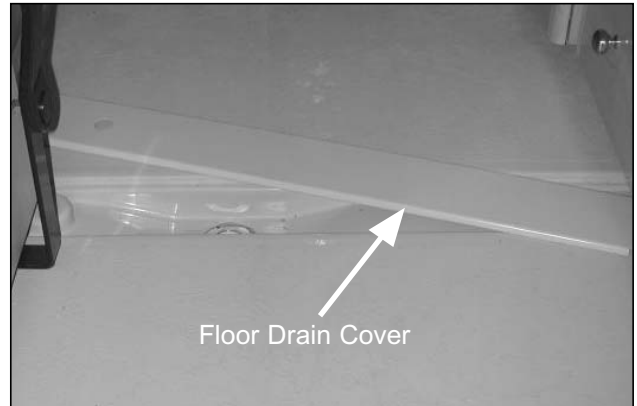
To set up the stand-up aisle shower:

1. Remove floor drain cover and drain plug from floor, (see Picture P-B29).
2. Privacy is achieved by extending the bathroom door and closing the galley, side door, and windshield curtains.
3. Release the Velcro retention straps from the shower curtain and move the hand held shower from its storage position to the shower position, (see Picture B-P30).
4. Draw the shower curtain until you are completely surrounded.
5. Using the Velcro connectors, secure the edges of the curtain to the inside edges of the door.
6. When adjusting the water temperature, be sure to allow enough time for the temperature adjusted water to exit the shower head before making further adjustments.
7. Roof vent or the bathroom vent may be used on **low speed** to remove steam and moisture.

To put away the stand-up shower:

1. Rinse and dry the shower curtain thoroughly, (this function is most easily performed before leaving the shower area after use).
2. Allow the curtain to air dry completely, (this function can be expedited by using the power roof vent or the power bathroom vent).
3. Replace drain plug and floor drain cover when you are finished.

To prevent the grey water tank contents from spilling onto the floor while driving, keep the drain plug secured when not in use.



Picture B-P29: Floor drain, to remove the floor drain cover use the access holes provided in the cover.



Picture B-P30: Location of the shower head in the shower position.

EXTRA COUNTER SPACE:

In order to provide additional counter space, your motorhome has the following three features:

1. stove cover.
2. sink cover, (cutting board).
3. slide out shelf above the cutlery drawer.

To raise the stove cover in the Popular unit, do the following:

1. The stove cover is fit so you just need to lift and secure using the thumb tab, Popular Model, (see Picture B-P31). In the Versatile Model, the stove cover slides to the rear and is locked in place with a thumb tab (pictures B-P31A, B-P31B, and B-P31C).
2. Raise/slide cover before cooking, when finished lower/return stove cover.

CAUTION: Make sure the stove is off and has cooled prior to lowering/sliding the stove top cover.

To access slide out shelf above cutlery drawer, do the following:

1. Open cutlery drawer.
2. Reach under and slide the shelf forward, (see Pictures B-P32 and B-P33). When the shelf is no longer in use, wipe it down and close the cutlery drawer.

TV:

To view the flat screen display, release the "T" handle (Picture B-P34B), and swing the screen on its base to the position you desire, (Picture B-P34C).

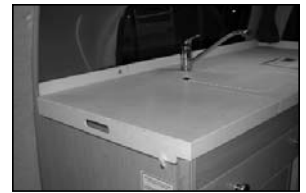
CAUTION: When the vehicle is in motion, it is recommended that the TV be in the stored position.



Picture B-P34C: TV facing front of vehicle (Popular model shown).



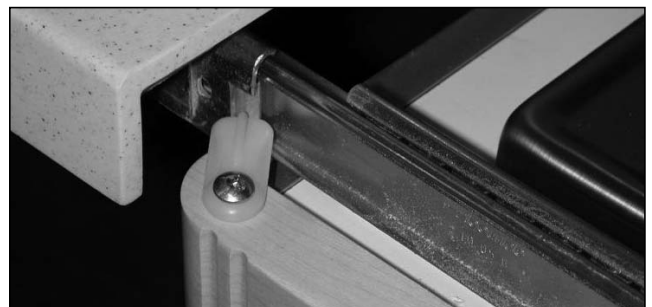
Picture B-P31: Lifting stove counter top, (Popular model).



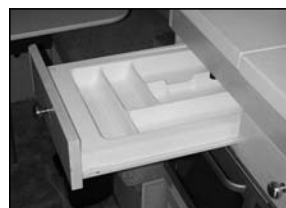
Picture B-P31A: Stored stove top cover, (Versatile model).



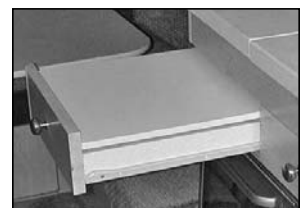
Picture B-P31B: Opened stove top cover. (Versatile model).



Picture B-P31C: Stove top cover thumb lock (Versatile model)



Picture B-P32: Cutlery drawer, (Vesatile model).



Picture B-P33: Counter top drawer fully open, (Versatile model).



Picture B-P34A: Flat Screen TV.



Picture B-P34B: "T" handle.

EXTERIOR ACCESS DOORS:

DRIVER SIDE ACCESS DOORS:

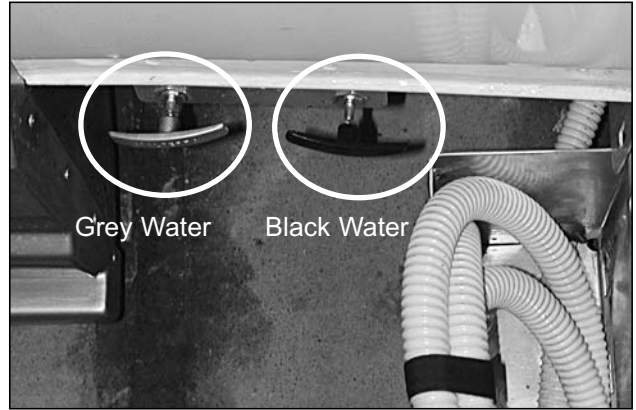
Behind the lockable middle access door, (see Pictures B-P35, 36 and 37) the following are found:

1. Sewage hose.
2. Grey water gate valve handle.
3. Black water gate valve handle.
4. Storage compartment.
5. Exterior fresh water drain valve.

Behind the driver side lockable rear access door, (see Picture B-P38) the following are found:

1. City water connection, (integrated at the side behind the rear access door).
2. City fresh water tank fill valve.
3. Exterior shower faucet.
4. Cable TV connection.
5. External 110V power connection.

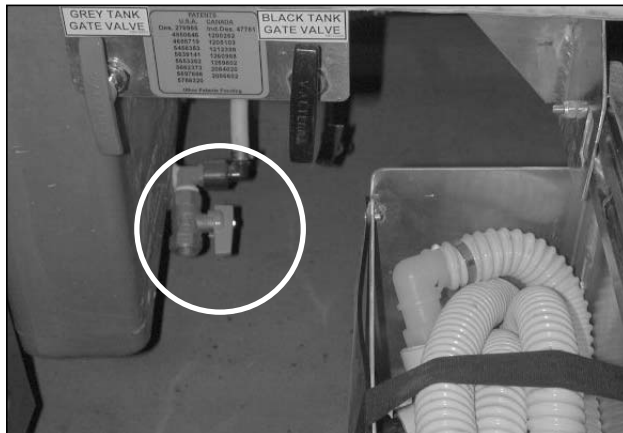
Warning: Before driving ensure the shore power cord and city water line are disconnected and are stored properly.



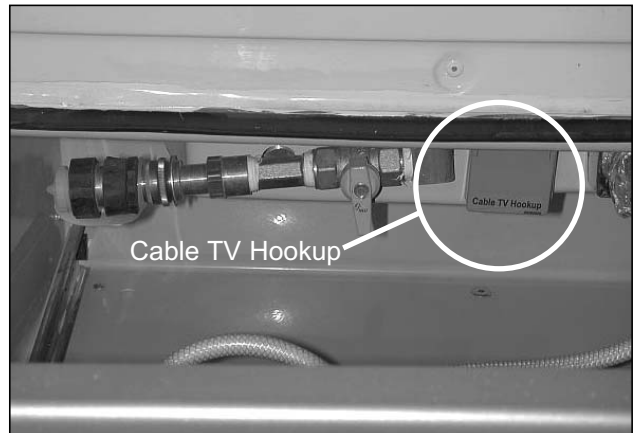
Picture B-P35: Black water, grey water valves and sewage hose locations.



Picture B-P36: Front access drawer showing storage.



Picture B-P37: Exterior fresh water tank low point drain valve.



Picture B-P38: External connections, (city water, cable TV).

PROPANE ACCESS PANEL:

Behind the **propane access panel**, (integrated into the rear bumper, covered with a black plate, see Picture B-P39), the following are found:

1. Propane fill valve.
2. Propane tank shut off valve.
3. Portable barbecue connection.

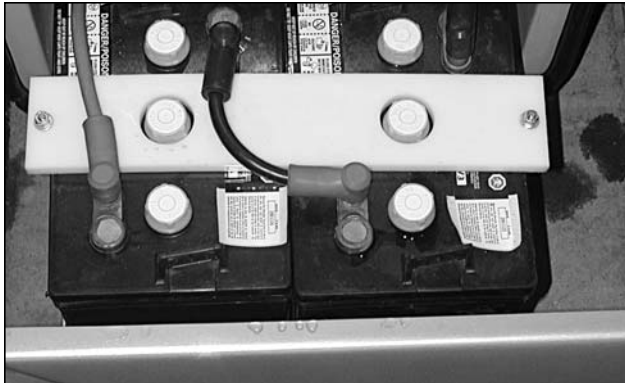


Picture B-P39: Propane access panel.

PASSENGER SIDE ACCESS DOORS:

Behind the access door in front of the rear passenger tire, (see Picture B-P40) the slide out tray with auxiliary battery(s) is found.

Behind the passenger side rear lockable access door to the rear of the passenger side rear wheel, (see Picture B-P41), a slide out storage drawer is found.



Picture B-P40: Slide out battery drawer, dual battery option shown.

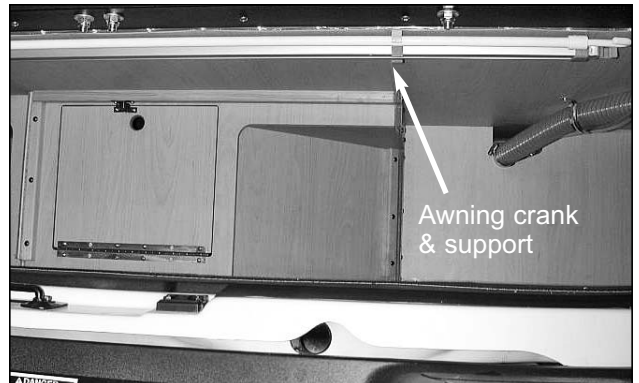


Picture B-P41: Slide out storage tray.

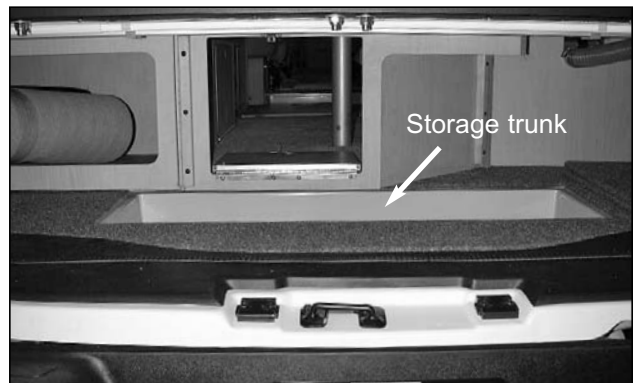
REAR STORAGE UNDER THE BED:

Awning crank/support storage, (see Picture B-P40A).

Rear storage trunk, (see Picture B-P41A).



Picture B-P40A: Awning crank and support storage.



Picture B-P41A: Rear storage trunk.

AUXILIARY BATTERY:

The auxiliary battery(s) are located behind the access door in front of the rear passenger tire, (see Picture B-P42). It is recommended to check the fluid levels in your battery(s) and grease the drawer sides on the battery compartment drawer once a month, (see maintenance section).

In order to access the auxiliary battery(s), one must do the following:

1. Unlock the battery access compartment.
2. Open the battery access compartment by turning the locking "T" handle.
3. Slide out the battery tray.

To return the battery(s) to their storage location, reverse the three steps above.

CAUTION: BATTERY ACID CAN BURN YOUR SKIN AND DAMAGE CLOTHING. PROTECTIVE EYE WEAR AND GLOVES SHOULD BE WORN WHEN HANDLING THE BATTERY(S)

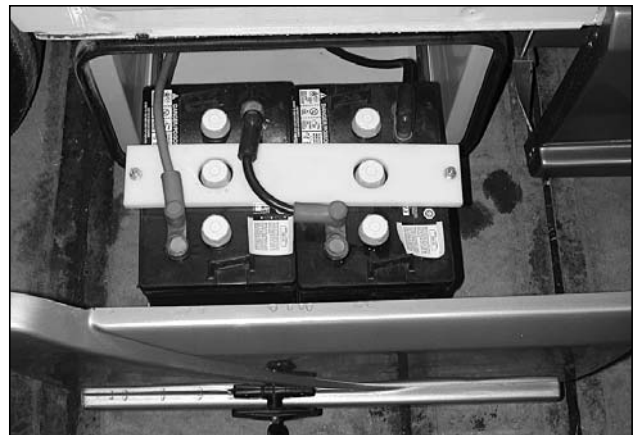
Observe all battery warnings and caution labels.

NOTE: Your vehicle is equipped with a 12 volt group 27 lead acid auxiliary battery. It is recommended that the acid levels in the battery be inspected and topped up if necessary at least once every month. See the battery manufacturers maintenance recommendations.

If your vehicle is equipped with the dual battery option, you will have two 6V deep cycle lead acid batteries. See the battery manufacturers maintenance recommendations.



Picture B-P42: Auxiliary battery(s) compartment.



Picture B-P43: Dual battery option shown.

REPLACING THE AUXILIARY BATTERY(S):

Replacement of the standard battery must be a 12 volt, group 27 deep cycle lead acid or equivalent.

Replacement of the dual battery option, if so equipped must be two 6 Volt deep cycle lead acid batteries.

Ensure that the battery cable hex nuts are tightened to 10 ft-lbs, (see Picture B-P43).

Ensure that the inverter and battery disconnect are disconnected prior to disconnecting the auxiliary battery.

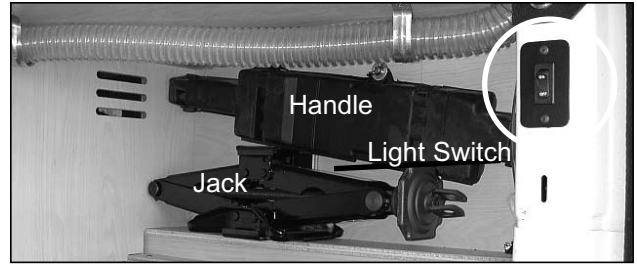
SPARE TIRE STORAGE:

The spare tire is located in the storage area found under the passenger side rear bed, (see Picture B-P44A). Unless equipped with an optional Continental Spare Tire Kit, (see Picture B-P45).

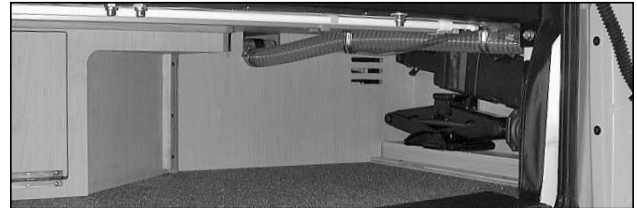
Brace yourself for the weight of the tire, (37 kg / 80 lbs).

The jack is located in the storage area found under the passenger side rear bed mounted on the outside wall, (see Picture B-P44).

Interior storage light switch, (see Picture B-P44).



Picture B-P44: Location of jack, handle and light switch.



Picture B-P44A: Storage area for spare tire.

CONTINENTAL SPARE TIRE KIT, (Optional):

Note: To open the driver side rear door, the spare tire kit must be lowered.

To access the full size spare tire:

1. Unlock and remove the chrome ring and fiberglass disc, (see picture B-P46).
2. While holding the spare tire, in the upright position, loosen the anti vibration bolt, (see picture B-P46A), and remove the safety catch pin on the elbow of the receiver.
3. Slowly lower the spare tire to the flat position, (see Picture B-P47). Brace yourself for the weight of the tire, (37 kg / 80 lbs).
4. Remove the lug nuts on spare tire to remove it from the spare tire carrier.



Picture B-P46A

To store the tire, repeat these steps in reverse.



Picture B-P45: Location of the Continental spare tire kit.



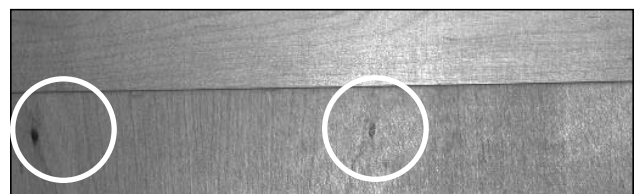
Picture B-P46: Remove the chrome ring and fiberglass disc.



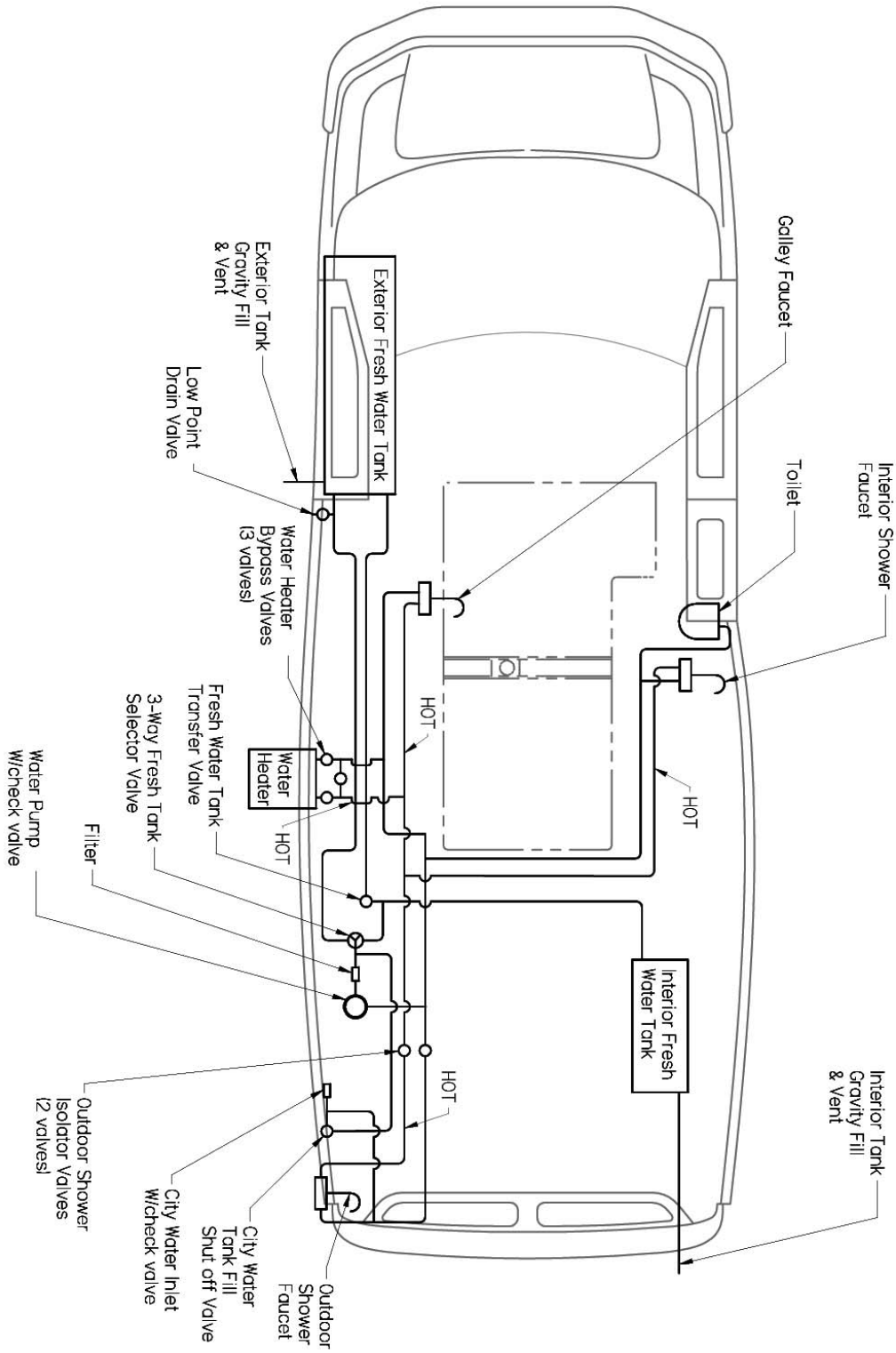
Picture B-P47: Remove the catch pin and the lower carrier to remove the spare tire.

Mineraling:

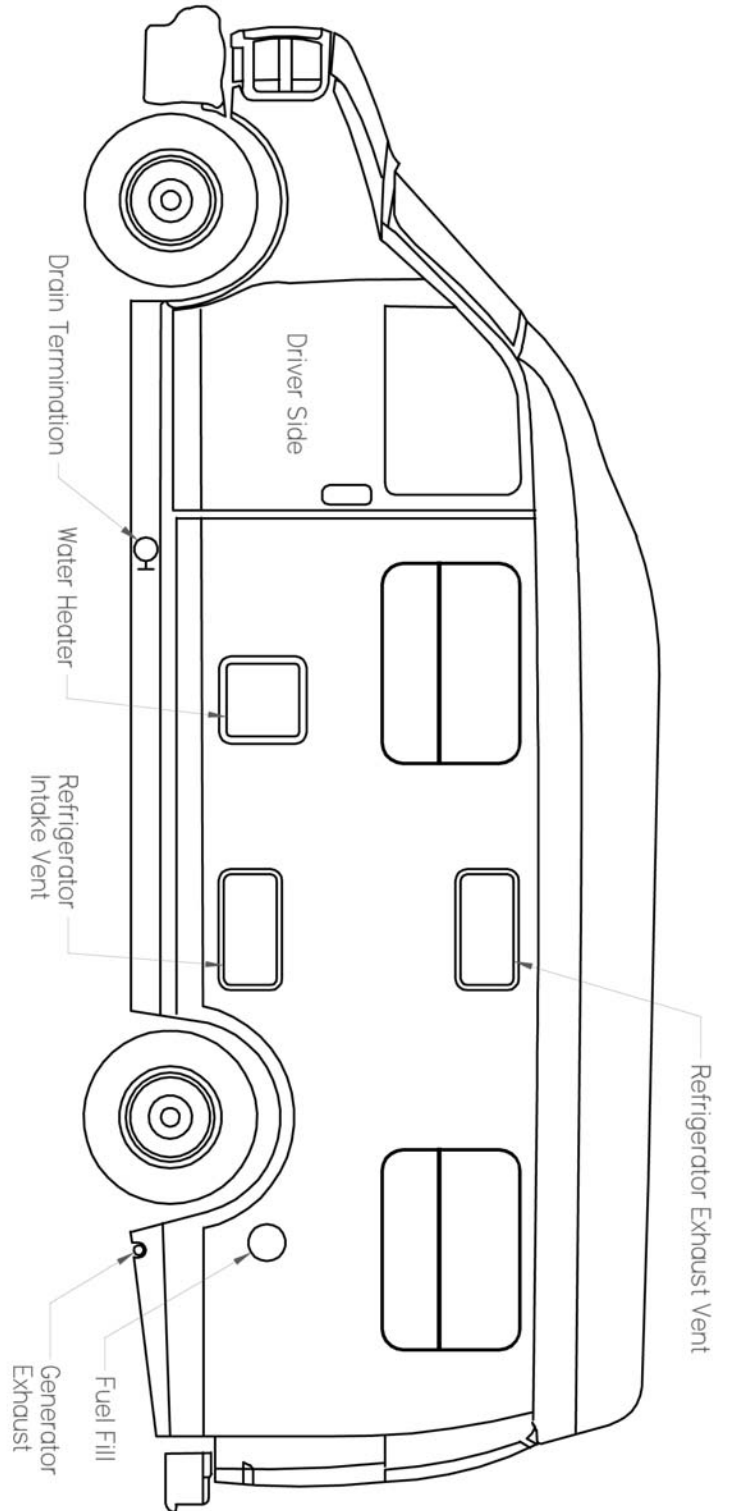
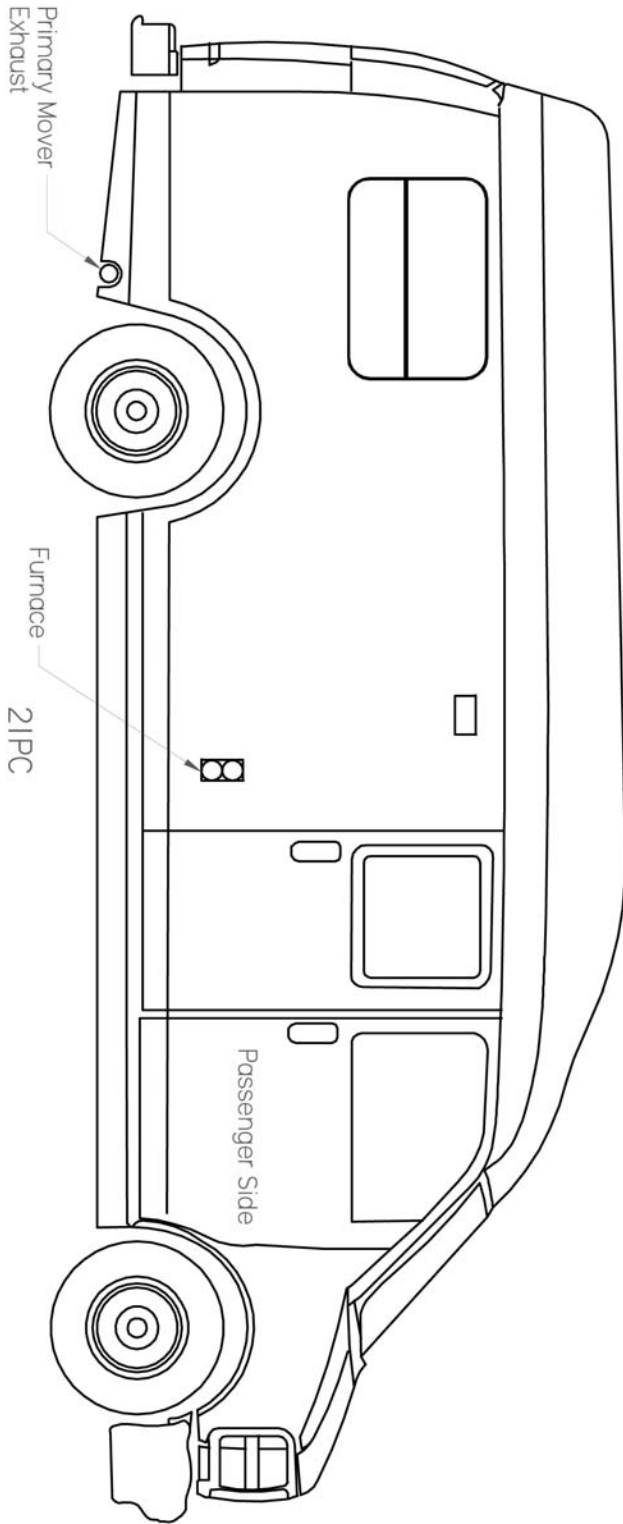
Due to the properties of natural Maple wood, Roadtrek Motorhomes makes no warranty against the mineraling of wood components, (see Picture B-P48).



Picture B-P48: Maple cabinet showing mineraling.

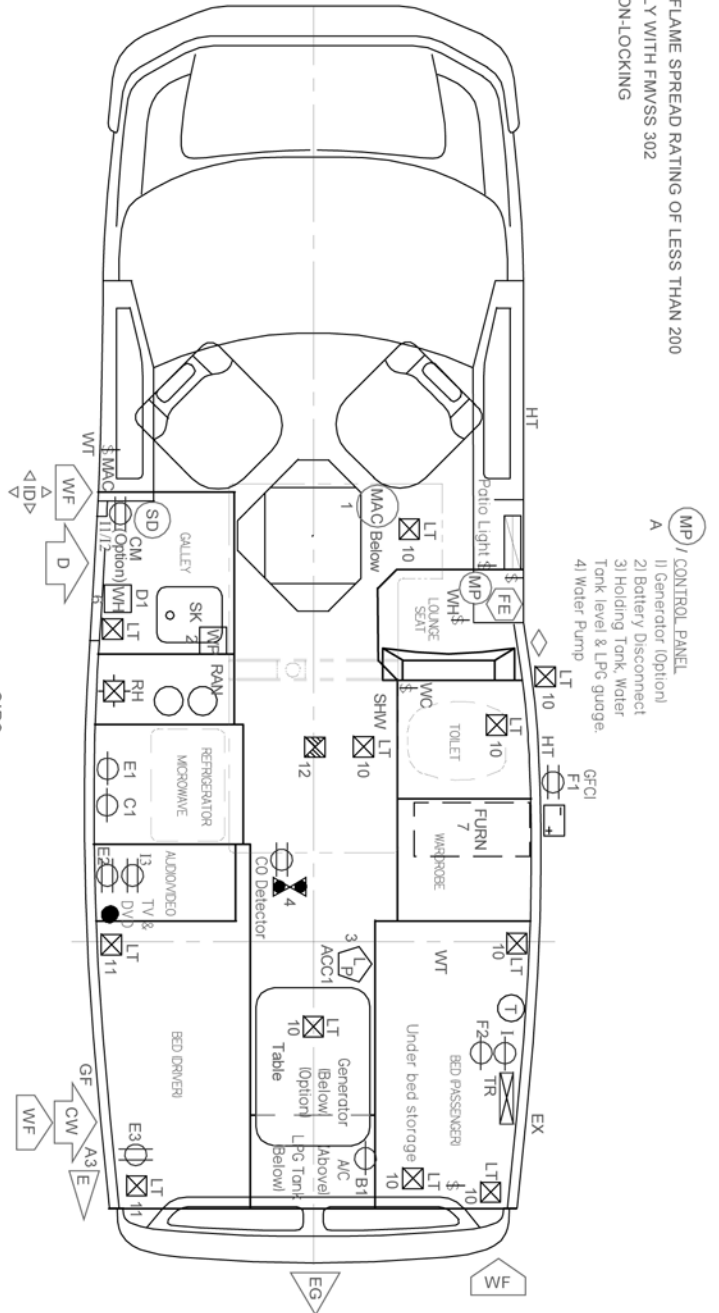


210 Chevrolet



210-Popular Chevrolet

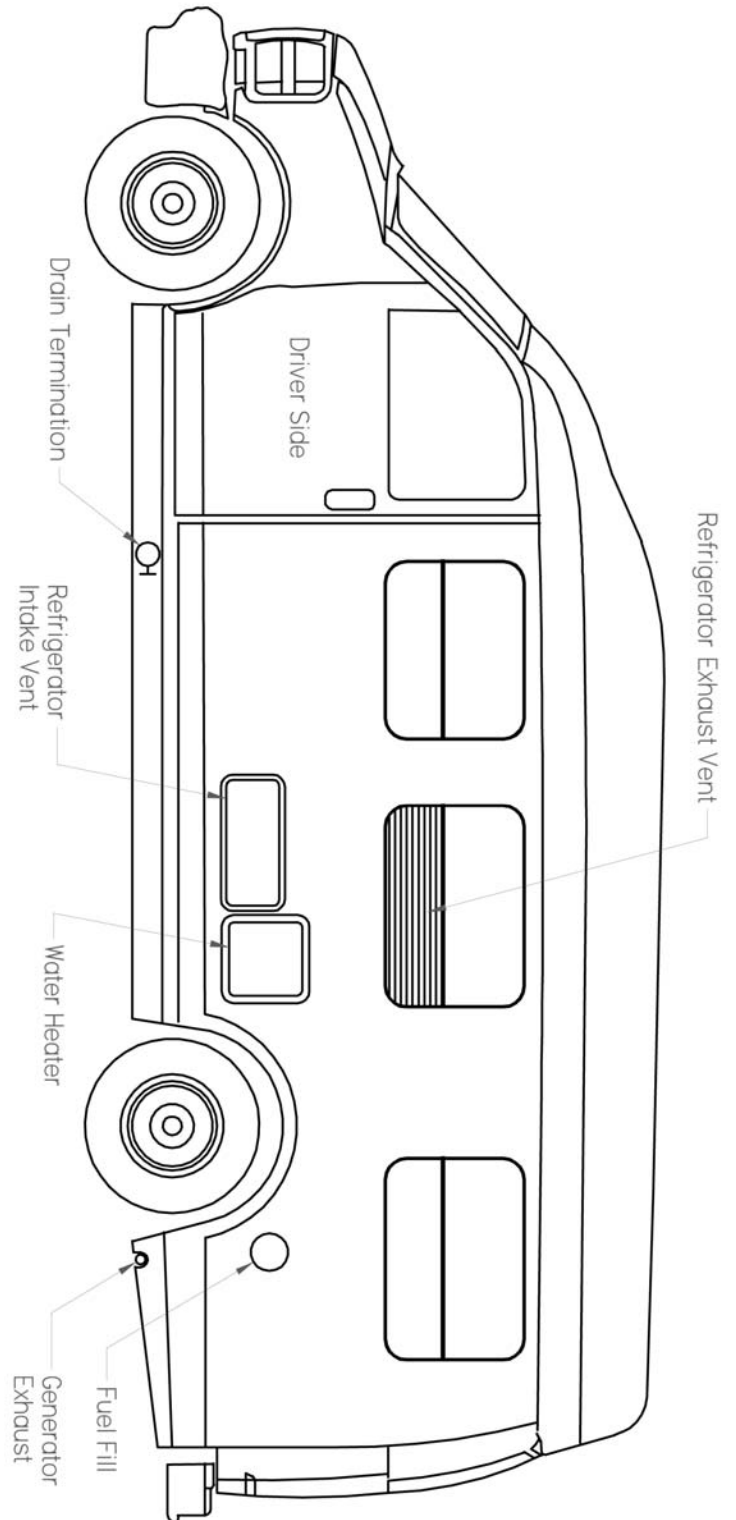
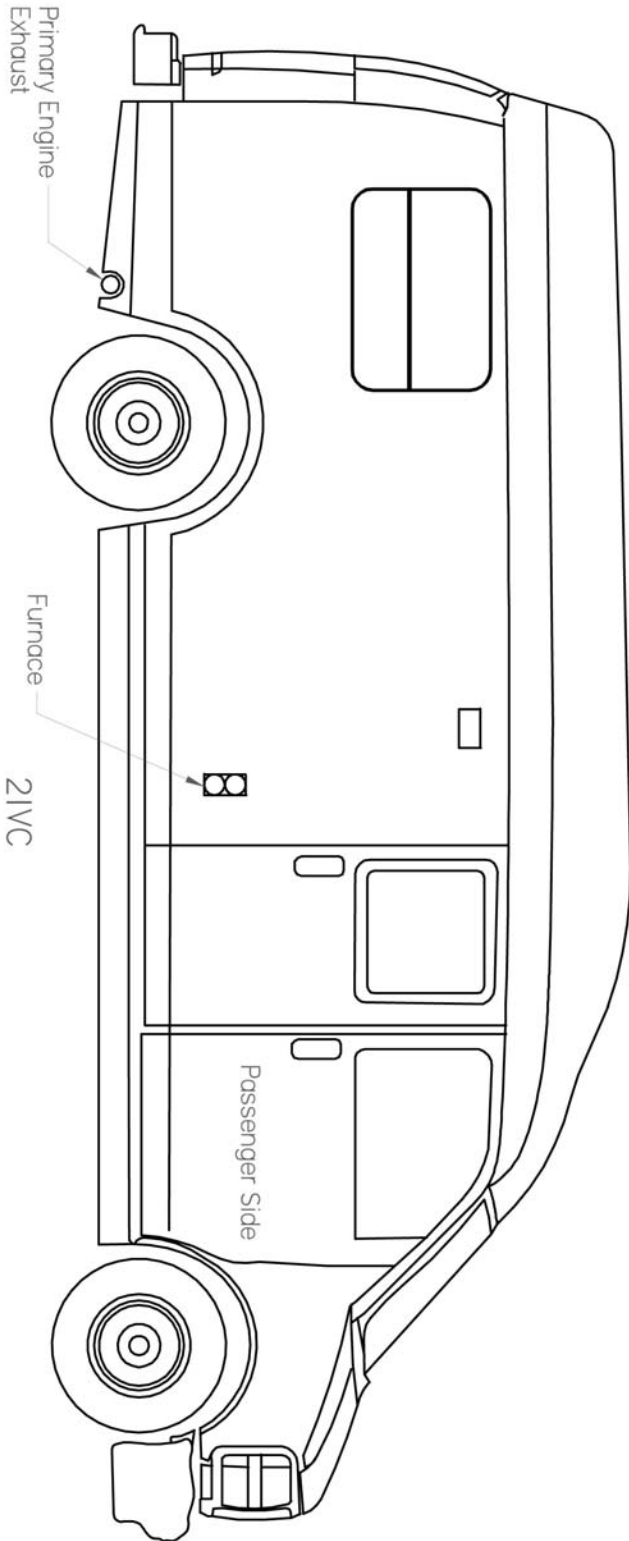
-INTERIOR FINISH MATERIALS HAVE A FLAME SPREAD RATING OF LESS THAN 200
 -INTERIOR TEXTILE MATERIALS COMPLY WITH FMVSS 302
 -INTERIOR DOORS/PARTITIONS ARE NON-LOCKING



Circuit	VOLTS	AMPS	WIRE SIZE	LOADING
12	12	15	14AWG STANDARD CU	Roof Vent Fan, Roof lights
11	12	15	14AWG STANDARD CU	Driver side lights, Cab light, Range hood vent Fan
10	12	10	14AWG STANDARD CU	Passenger side lights, Patio light
9	12	15	14AWG STANDARD CU	Audio / Video Cabinet
8	12	10	16AWG STANDARD CU	Heat Pump
7	12	10	14AWG STANDARD CU	Furnace
6	12	10	14AWG STANDARD CU	Water Heater
5	12	20	10AWG STANDARD CU	Refrigerator
4	12	1	18AWG STANDARD CU	CO Detector
3	12	1	18AWG STANDARD CU	LP Gas Detector
2	12	10	14AWG STANDARD CU	Water Pump
1	12	20	10AWG STANDARD CU	Maecrator
I	110	6	14AWG 2CU W/GROUND	Inverter output
II / 12	110	15	14AWG 2CU W/GROUND	Galley Receptacle
13	110	15	14AWG 2CU W/GROUND	Audio / Video (AV) cabinet Receptacle
F2	110	15	14AWG 2CU W/GROUND	Inverter / Charger Receptacle
F1	110	15	14AWG 2CU W/GROUND	Outdoor Receptacle - passenger side
E3	110	15	14AWG 2CU W/GROUND	Rear wall Receptacle
E2	110	15	14AWG 2CU W/GROUND	Lower A/V Receptacle
E1	110	15	14AWG 2CU W/GROUND	Fridge Receptacle
D1	110	15	14AWG 2CU W/GROUND	Water heater
C1	110	15	14AWG 2CU W/GROUND	Microwave oven Receptacle
B1	110	20	12AWG 2CU W/GROUND	AC / Heatpump Receptacle
A3	110	30	10AWG 2CU W/GROUND	Outdoor Receptacle
A	110	30	10AWG 2CU W/GROUND	Main Power Switch

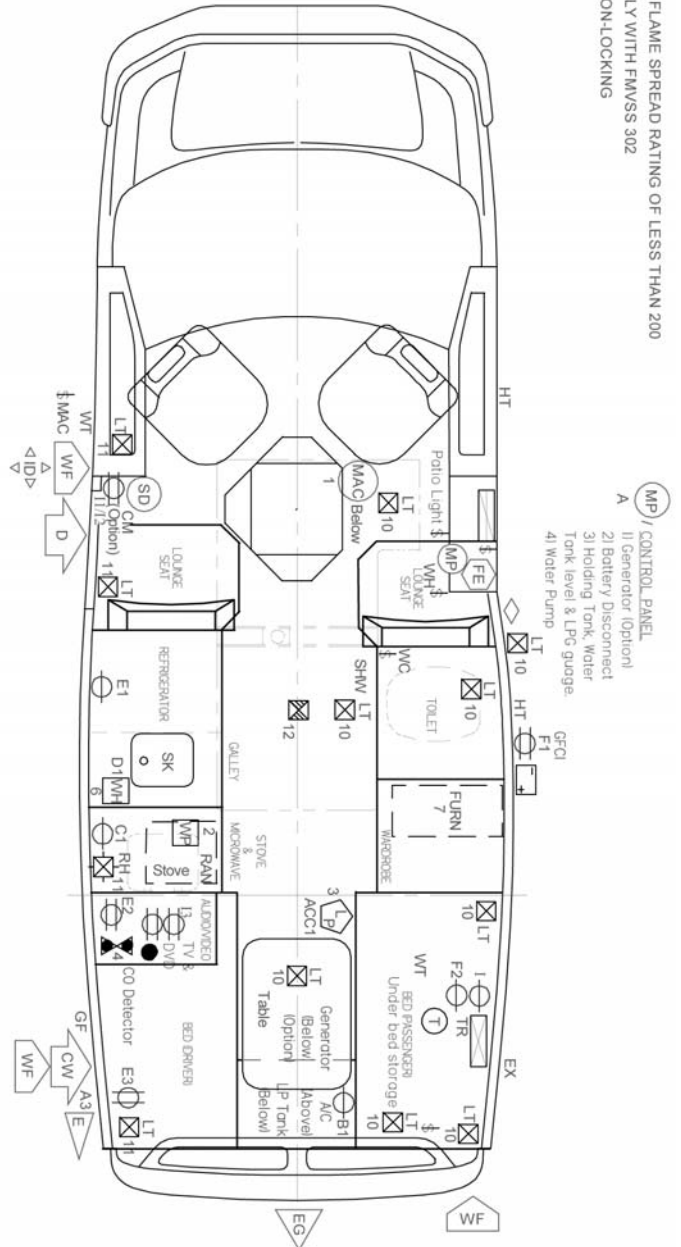
CIRCUIT SCHEDULE

210-Popular Chevrolet



210-Versatile Chevrolet

- INTERIOR FINISH MATERIALS HAVE A FLAME SPREAD RATING OF LESS THAN 200
- INTERIOR TEXTILE MATERIALS COMPLY WITH FMVSS 302
- INTERIOR DOORS/PARTITIONS ARE NON-LOCKING

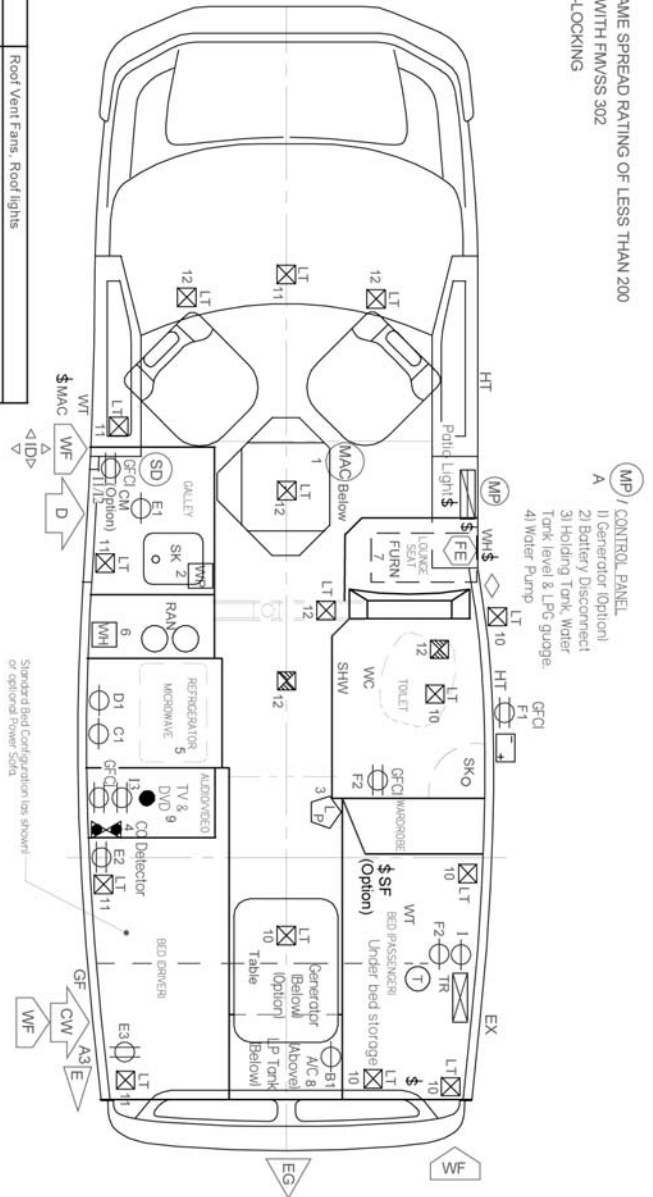


Circuit	VOLTS	AMPS	WIRE SIZE	LOADING
12	12	15	14AWG STANDARD CU	Roof Vent Fan, Roof lights
11	12	15	14AWG STANDARD CU	Driver side lights, Cab light, Range hood vent Fan
10	12	10	14AWG STANDARD CU	Passenger side lights, Patio light
9	12	15	14AWG STANDARD CU	Audio / Video Cabinet
8	12	10	16AWG STANDARD CU	Heat Pump
7	12	10	14AWG STANDARD CU	Furnace
6	12	10	14AWG STANDARD CU	Water Heater
5	12	20	10AWG STANDARD CU	Refrigerator
4	12	1	18AWG STANDARD CU	CO Detector
3	12	1	18AWG STANDARD CU	LP Gas Detector
2	12	10	14AWG STANDARD CU	Water Pump
1	12	20	10AWG STANDARD CU	Macerator
1	110	6	14AWG 2CU W/GROUND	Inverter output
11/12	110	15	14AWG 2CU W/GROUND	Galley/Receptacle
13	110	15	14AWG 2CU W/GROUND	Audio / Video (AV) cabinet Receptacle
F2	110	15	14AWG 2CU W/GROUND	Inverter / Charger Receptacle
F1	110	15	14AWG 2CU W/GROUND	Outdoor Receptacle - passenger side
E3	110	15	14AWG 2CU W/GROUND	Rear wall Receptacle
E2	110	15	14AWG 2CU W/GROUND	Lower AV/Receptacle
E1	110	15	14AWG 2CU W/GROUND	Fridge Receptacle
D1	110	15	14AWG 2CU W/GROUND	Water heater
C1	110	15	14AWG 2CU W/GROUND	Microwave oven Receptacle
B1	110	20	12AWG 2CU W/GROUND	AC / Heatpump Receptacle
A3	110	30	10AWG 2CU W/GROUND	Outdoor Receptacle
A	110	30	10AWG 2CU W/GROUND	Main Power Switch

CIRCUIT SCHEDULE 21VC

210-Versatile Chevrolet

- INTERIOR FINISH MATERIALS HAVE A FLAME SPREAD RATING OF LESS THAN 200
- INTERIOR TEXTILE MATERIALS COMPLY WITH FMVSS 302
- INTERIOR DOORS/PARTITIONS ARE NON-LOCKING

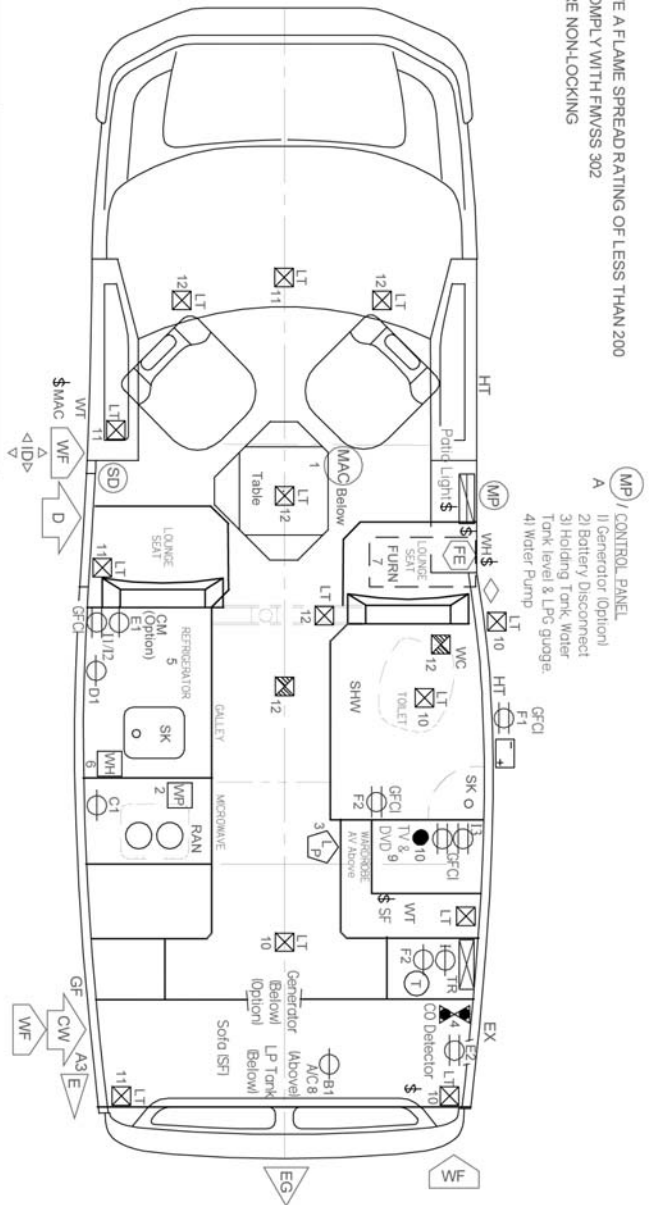


Circuit	VOLTS	AMPS	WIRE SIZE	LOADING
12	12	15	14AWG STANDARD CU	Roof Vent Fans, Roof lights
11	12	15	14AWG STANDARD CU	Driver side lights, Cab light
10	12	10	14AWG STANDARD CU	Passenger side lights, Patio light
9	12	15	14AWG STANDARD CU	Audio / Video Cabinet
8	12	10	16AWG STANDARD CU	AC / Heat Pump
7	12	10	14AWG STANDARD CU	Furnace
6	12	10	14AWG STANDARD CU	Water Heater
5	12	20	10AWG STANDARD CU	Refrigerator
4	12	1	18AWG STANDARD CU	CO Detector
3	12	1	18AWG STANDARD CU	LP Gas Detector
2	12	10	14AWG STANDARD CU	Water Pump
1	12	20	10AWG STANDARD CU	Macerator
N/A	12	30	10AWG STANDARD CU	Power Sofa (SF) - Optional
1	110	6	14AWG 2CU W/GROUND	Inverter output
11/12	110	15	14AWG 2CU W/GROUND	Galley Receptacle
13	110	15	14AWG 2CU W/GROUND	Audio / Video (AV) cabinet Receptacle
F2	110	15	14AWG 2CU W/GROUND	Inverter / Charger Receptacle and Closet Receptacle
F1	110	15	14AWG 2CU W/GROUND	Outdoor Receptacle - Passenger side
E3	110	15	14AWG 2CU W/GROUND	Driver side rear wall Receptacle
E2	110	15	14AWG 2CU W/GROUND	Driver side lower wall Receptacle
E1	110	15	14AWG 2CU W/GROUND	Coffee Maker
D1	110	15	14AWG 2CU W/GROUND	Refrigerator Receptacle
C1	110	20	12AWG 2CU W/GROUND	Microwave oven Receptacle
B1	110	20	12AWG 2CU W/GROUND	AC / Heatpump Receptacle
A3	110	30	10AWG 2CU W/GROUND	Outdoor Receptacle
A	110	30	10AWG 2CU W/GROUND	Main Power Switch

CIRCUIT SCHEDULE 21VC

210-Popular Chevrolet with Permanent Bathroom

-INTERIOR FINISH MATERIALS HAVE A FLAME SPREAD RATING OF LESS THAN 200
 -INTERIOR TEXTILE MATERIALS COMPLY WITH FMVSS 302
 -INTERIOR DOORS/PARTITIONS ARE NON-LOCKING



12	12	15	14AWG STANDARD CU	Roof Vent Fans, Roof lights
11	12	15	14AWG STANDARD CU	Driver side lights, Cab light
10	12	10	14AWG STANDARD CU	Passenger side lights, Patio light
9	12	15	14AWG STANDARD CU	Audio / Video Cabinet
8	12	10	16AWG STANDARD CU	AC / Heat Pump
7	12	10	14AWG STANDARD CU	Furnace
6	12	10	14AWG STANDARD CU	Water Heater
5	12	20	10AWG STANDARD CU	Refrigerator
4	12	1	18AWG STANDARD CU	CO Detector
3	12	1	18AWG STANDARD CU	LP Gas Detector
2	12	10	14AWG STANDARD CU	Water Pump
1	12	20	10AWG STANDARD CU	Maceator
N/A	12	30	10AWG STANDARD CU	Power Sofa (SF)
1	110	6	14AWG 2CU W/GROUND	Inverter output
11/12	110	15	14AWG 2CU W/GROUND	Galley Receptacle
13	110	15	14AWG 2CU W/GROUND	Audio / Video (AV) cabinet Receptacle
F2	110	15	14AWG 2CU W/GROUND	Inverter / Charger Receptacle and Closet Receptacle
F1	110	15	14AWG 2CU W/GROUND	Outdoor Receptacle - Passenger side
E2	110	15	14AWG 2CU W/GROUND	Passenger Side Rear Receptacle
E1	110	15	14AWG 2CU W/GROUND	Coffee Maker
D1	110	15	14AWG 2CU W/GROUND	Refrigerator Receptacle
C1	110	15	14AWG 2CU W/GROUND	Microwave oven Receptacle
B1	110	20	12AWG 2CU W/GROUND	AC / Heatpump Receptacle
A3	110	30	10AWG 2CU W/GROUND	Outdoor Receptacle
A	110	30	10AWG 2CU W/GROUND	Main Power Switch

CIRCUIT SCHEDULE 21VC

210-Versatile Chevrolet with Permanent Bathroom

Electrical System

NOTE: INVERTER

Your Owner's Manual for RV750ULHW contains essential information you need to enjoy the electrical conveniences of home while at RV parks or dry camping. However, we wish to highlight information pertaining to the charging system, in order to help avoid possible confusion:

Supplying shore power or, (optional) generator power enables RV750ULHW to charge the auxiliary battery (ies). Operation of your vehicle engine and alternator will also charge the auxiliary battery (ies). When your motorhome is not plugged-in to shore power or, (optional) AC generator power, all electricity you use draws power from your motorhome's auxiliary battery bank, with the inverter allowing you to enjoy quiet DC-to-AC, (12 volt to 110 volt) power to the A/V cabinet and galley receptacle in the absence of shore or generator power.

10V inverter/charger shut down

As a safety feature, the inverter component of the RV750ULHW inverter/charger, (which changes DC battery power to AC electricity) will shut down when the auxiliary battery bank drops below 10 volts DC (approximate). This occurs in order to avoid excessive discharging and potential damage to the battery (ies). It is possible, however, for the battery (ies) to become discharged below 10 volts DC as a function of activity other than using the inverter. For example, while dry camping, in the absence of shore or generator power, if a 12 volt appliance such as the fridge, furnace or lights are left on for an extended period of time. It is not recommended to leave the battery(ies) in this condition, recharge as soon as possible.

Dry camping battery conservation

While dry camping, (no 110 VAC power available) to conserve battery power, it is recommended to either switch the inverter to the off position or adjust the Load Sense dial (see the Tripp-Lite Manual). If the inverter is left in the ON position, it will continue to draw 1.25 amps. The inverter remote ON/OFF switch is located beside the electrical panel above the passenger lounge seat.

Receptacle functionality

When using your motorhome and connected to shore power or optional generator, the receptacles in the audio/video cabinet and in the galley will function to the 15 amp capacity supplied from the distribution panel. However when no shore power or option generator power is available, these receptacles are limited to the 750 watts, (7 amps) output from the inverter.

If an overload occurs, the inverter will shut down, and will need to be reset manually, by turning the inverter off for 1 minute, removing the load, and then turn the inverter back on.

The vehicle's electrical system should not be subjected to changes and or additions to circuitry, appliances, etc. without consulting your dealer or Roadtrek for proper installation procedures.

Failure to do this could result in serious safety issues or component damage. Changes to the electrical system run the risk of voiding the warranty.

110V / 12V INVERTER / CHARGER / DISTRIBUTION PANEL:

For your convenience when camping in parks with connections for 110V power, all our models have in the electrical system a 110/12 volt distribution panel / inverter / charger. The inverter/charger provides 12 volt power for the 12 volt appliances and the inverter provides 110 volt power for the galley receptacle and the audio/video receptacle. The inverter charger also charges auxiliary batteries present in the system to supply power for all the 12 volt appliances.

See "Floor Plan & Appliance Location" for the distribution/inverter/charger location. To open the distribution panel simply pull the access door until the cover is released. All the 110 volt breakers and 12 volt fused circuits are identified on the back side of behind the distribution panel access door.

EXTERNAL ELECTRICAL SOURCE CONNECTION:

Your vehicle is equipped with a heavy duty 30 amp. power cord that can be connected to an outside 110V power source.

The power cord is stored in the storage compartment, (see picture G-P19) located behind the driver side rear tire.

NOTICE: Do not place heavy or sharp objects on the power cord.

A 30 to 15 amp. adapter is **not** included with your vehicle.

NOTICE: When connecting your system to an external power source, ensure that a properly equipped, (three pronged) and functioning receptacle is used. If any type of spark or shock is detected, disconnect from the source immediately and do not reconnect until the problem is corrected.

GENERATOR:

All service requirements are listed in the Onan Owner's Manual.

The generator is located and accessed on the underside behind the rear axle of your vehicle.

CAUTION: When launching a boat, using your Roadtrek, it is important to know that a generator must not be submerged in water. This will permanently damage the generator. If you cannot launch without submerging the generator, an alternate method would be to use a boat launching service.

Notice: To prevent carburetor damage, add an approved fuel stabilizer to the fuel tank, then run your generator for a minimum of 20 minutes under load monthly.

BUILT-IN 110V HEAT PUMP/AIR CONDITIONER:

In addition to the operating instructions contained in the Manufacturer's Owner's Manual, the heat pump/air conditioner should be started as follows when the optional generator is used:

1. Set the battery disconnect switch on the monitor panel to the "ON" position.
2. Start the generator and run for several minutes until warm.
3. Set thermostat setting above ambient temperature.
4. Turn thermostat control to the "low cool" position.
5. Turn fan to the ON position.
6. Adjust the thermostat cooler until the compressor starts.
7. Once compressor is running adjust the thermostat to desired setting. Your vehicle should be parked as close to level as possible to maximize the air conditioner's efficiency.

NOTE: The heat pump can be used to warm the motorhome on cool nights. For colder temperatures, below 40°F (4°C), it is suggested that the propane furnace be used for heat.

MONITOR PANEL:

The monitor panel is located on the shelf above the passenger lounge seat, (see Picture E-P1). For location of porch light switch with optional armoire, (see Picture E-P1B).

The monitor panel is used to provide the approximate fluid levels in the fresh, grey and black, (holding) water tanks, the propane tank, and the charge level of the auxiliary battery(s).

The monitor panel has a series of L.E.D. lights that mark the fluid levels at set increments of F, (full), 2/3, 1/3 and E, (empty). Therefore with respect to the water tank levels, you must be aware that the panel does not always reflect the actual fluid levels. For example, when the 1/3 level light is on, the tank may be anywhere from 1/3 to just under 2/3 full. When the panel reads empty, the tank may be anywhere from empty to just under 1/3 full.

The black and grey water tanks must be flushed regularly with sanitation fluid, to prevent the accumulation of solids on the probes to maintain accurate black and grey water level readings. Required tank flushing will vary depending on usage.

To flush: Refer to the instructions on the Waste Tank Dumping found in the Water Systems Section.

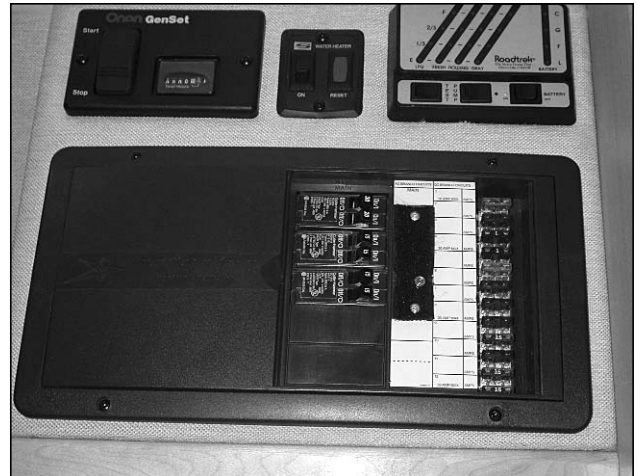
NOTE: When the water system is operating in the winter mode, only the interior fresh water tank is to be used.

The auxiliary battery charge level indicator is marked "C", "G", "F", and "L".

1. "C" indicates the battery is fully charged or charging.
2. "G" indicates the battery charge is "good".
3. "F" indicates "fair".
4. "L" indicates "low".

The battery condition is indicated by the uppermost light that is on. For example, if the "G", "F", and "L" lights are on, the battery charge is "good". When running exclusively on battery power without the engine running the normal state of the battery will be Good.

The panel also provides the switch for the water pump and a disconnect switch for the auxiliary battery.



Picture E-P1: Monitor panel, water heater switch, 110V/12V distribution panel and optional generator control switch.



Picture E-P1A: Location of porch light switch.



Picture E-P1B: Location of porch light switch with optional armoire.

AUXILIARY BATTERY AND ISOLATOR:

The standard auxiliary battery is a group 27 lead acid battery. The auxiliary battery is located behind the passenger side access door found ahead of the rear wheel, (see section on Auxiliary Battery). To access the battery refer to the auxiliary battery section found in the Daily Living section.

The auxiliary battery is automatically charged through the isolator by the engine's alternator while the engine is running. This battery is also automatically charged by the inverter / charger when:

1. The battery disconnect switch on the monitor panel is set to the "ON" position prior to connection to an outside electrical power source.
2. The breaker for the inverter/charger in the distribution panel is in the "ON" position.
3. Or while the generator is in operation, (if so equipped).

A disconnect switch, located on the monitor panel, provides a disconnect for the auxiliary battery from the 12V system while the vehicle is not in use.

Since the auxiliary battery is a deep-cycle type, it may be discharged completely and recharged without damage, (whereas the automotive battery is designed to be kept fully charged by the alternator and may undergo damage if fully discharged). However, the auxiliary battery should never remain in a discharged state and should be recharged immediately to prevent damage. When not in use, the auxiliary battery will slowly discharge on its own.

Accordingly, if the battery is not being used, it should be **recharged monthly** by connecting to an outside electrical power source, by operating the generator, (if equipped) for at least 12 hours, or by running the vehicle's engine for a minimum of 2 hours.

The **isolator** is located under the hood in the engine compartment. The isolator allows the alternator to charge both the automotive and auxiliary batteries when the engine is running, and it will prevent your vehicle's 12V motorhome equipment, (interior lights, water pump, exhaust fans, furnace blower, etc.) from draining the automotive battery.

AUTOMOTIVE BATTERY:

The automotive radio in your vehicle will exert a small draw on the automotive battery to maintain the time and preset stations.

To prevent the battery from being completely discharged, the radio should be disconnected from the automotive battery when your vehicle will be out of service for 2 months or more. Failure to do this may risk voiding the warranty.

The radio can be disconnected by removing the 10 amp. radio fuse from the automotive fuse block, located at the left underside of the dash, or by disconnecting the negative automotive battery cable. See Automotive Owners Manual for full radio operating instructions.

INTERIOR CAB LIGHT :

The interior 12V cab light located on the underside of the cab ceiling panel has 3 bulbs and a multipurpose switching system. This switching system utilizes the switch on the light itself and the dash mounted headlight switch, located to the left of the steering wheel. The center light bulb is wired to the automotive time delay circuit, and the outboard bulbs are on the auxiliary (motorhome) battery circuit.

Refer to the Chevrolet's Owner's Manual for complete operation instructions.

WATER HEATER :

The Roadtrek is equipped with a water heater. The water heater operates on Propane. Please refer to the Suburban Owner's Manual for complete operation instructions.

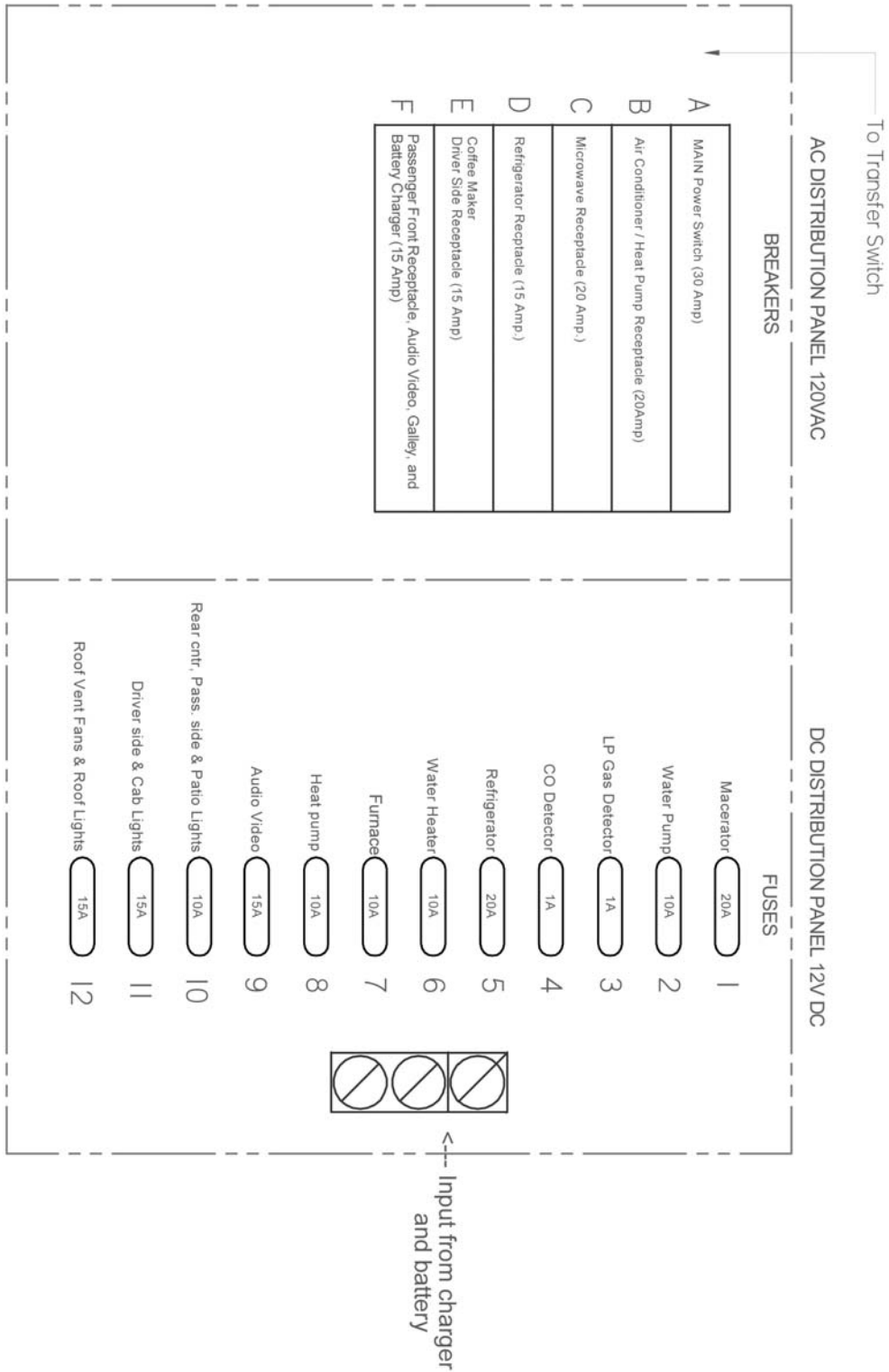
REAR STORAGE LIGHT :

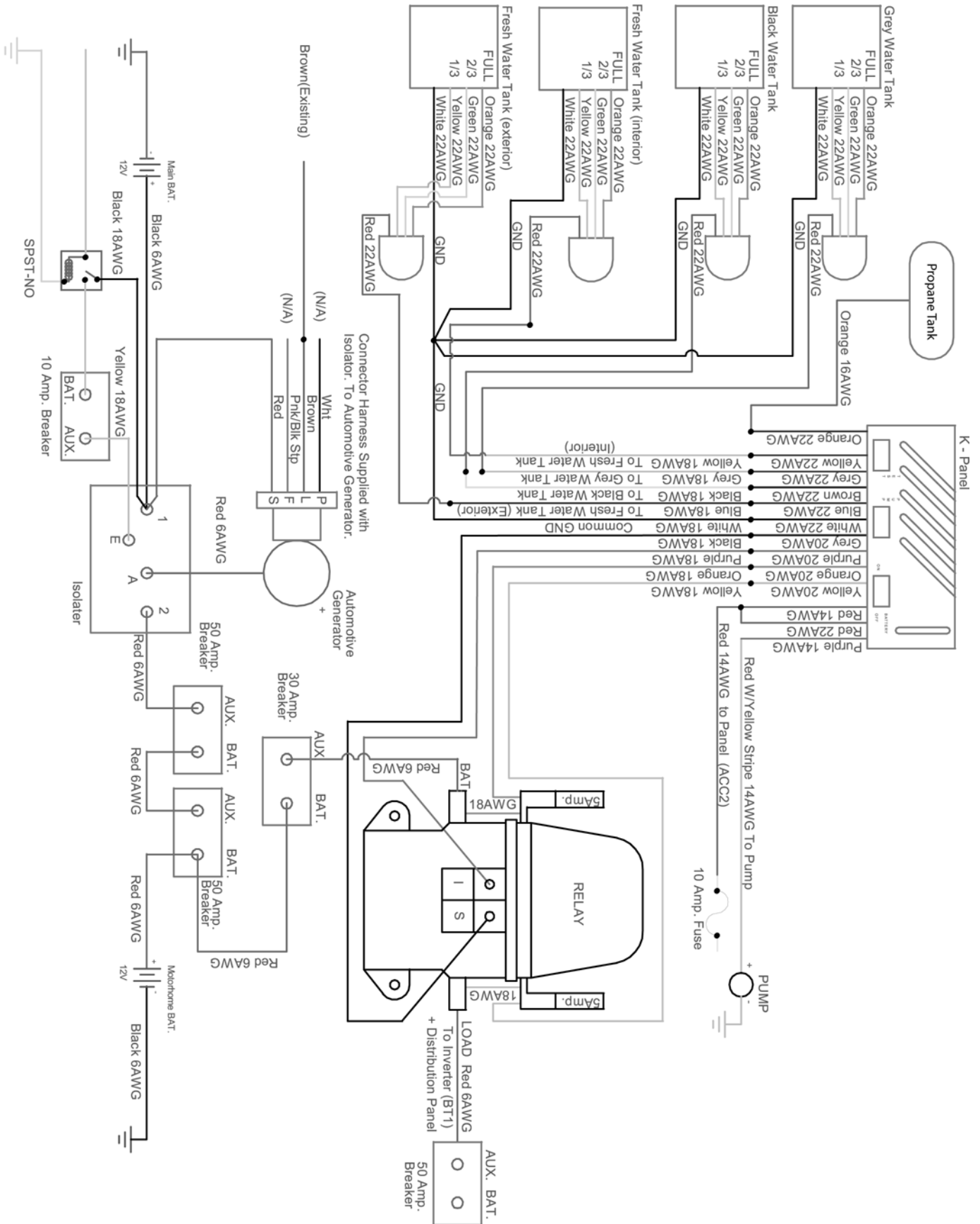
The inside rear storage light is powered by the auxiliary battery. The switch is located on the passenger side rear door post, (see Picture B-P44 on page B-16) (non sofa-bed models only).

	POTABLE WATER FILL	●	T.V. JACKS	SK	KITCHEN SINK
	CITY WATER INLET	(T)	THERMOSTAT	TR	TRANSFER SWITCH
	POTABLE WATER PUMP	(M/P)	MONITOR PANEL	WC	WATER CLOSET
	DRAIN OUTLET	(M/A/C)	MACERATOR	WH	WATER HEATER
	INSIGNIA LOCATION		BATTERY STORAGE	WT	WATER TANK
	FIRE EXTINGUISHER (MIN. 10B.C.)		PROPANE DETECTOR		
	EMERGENCY EGRESS (17"x24" min.)	A/C	AIR CONDITIONER		
	MFG. ID LABEL	BAT	BATTERY CHARGE LEVEL INDICATOR		
	SMOKE DETECTOR	CM	COFFEE MAKER		
	CARBON MONOXIDE DETECTOR	EX	ENGINE EXHAUST		
	INVERTER / CHARGER	FURN	COMFORT HEATING APPL.		
	110V DISTRIBUTION PANEL	GEN	GENERATOR SET		
	12V FUSE BLOCK / BOX	GF	GASOLINE FILL		
	110V + 12V DISTRIBUTION PANELS	GFI	GROUND FAULT INTERRUPT		
	110V SINGLE RECEPTACLE	GFI/C	GROUND FAULT INTERRUPT CIRCUIT		
	110V DUPLEX RECEPTACLE	HT	HOLDING TANK		
	110V SPLIT DUPLEX RECEPTACLE	LAV	LAVATORY		
\$	SINGLE POLE SWITCH	PROPANE	PROPANE STORAGE TANKS		
\$	2 POLE DBL THROW SWITCH	MIC	MICROWAVE		
	12V LIGHT FIXTURE	RAN	COOKING APPLIANCE		
	12V EXHAUST FAN	REF	REFRIGERATOR		
	COMB. 12V FAN/LIGHT FIXTURE	RH	RANGE HOOD		
	120V ELECTRICAL INLET	SHW	SHOWER		

LEGEND
 ROADTREK MOTORHOMES
 SYMBOLS AND ABBREVIATIONS LEGEND

Electrical distribution panel 210C





Propane and Safety System

Your vehicle is equipped with a propane system which, when properly handled and maintained, will provide trouble and worry free operation of your propane fueled appliances.

Propane fuel is stored in a liquid state under extremely high pressure. As fuel is used, Propane vapor passes from the top of the tank through the regulator into the gas lines and eventually to the appliances.

Although the entire system has undergone extensive factory and dealer testing for leaks, the system's connections and fittings are subjected to road vibrations and therefore **should be checked annually for possible leaks.**

Propane fuel is extremely flammable, colourless, heavier than air and smells like garlic or rotten eggs.

IF YOU SMELL PROPANE GAS, extinguish any open flames, pilot lights and smoking materials **immediately**. Do not touch any electrical switches. Leave vehicle, shut off the gas supply at the tank valve and open doors and windows to provide maximum ventilation. Leave the area until the odor clears. Have the system checked and the leak corrected before use.

Propane fuel tank valve must be open to operate gas fueled appliances.

WARNING: Propane tanks shall not be placed or stored inside your vehicle. Propane tanks are equipped with safety devices which relieve excessive pressure by discharging gas to the atmosphere.

WARNING: To reduce the danger of fire or explosion do not store gasoline or other flammable liquids inside your vehicle.

WARNING: Ensure you purchase propane from a reputable propane facility. Contaminated propane is a common cause of system failure.

WARNING: Follow all recommended maintenance schedules.

PROPANE TANK:

To open and close the tank use the manual tank shutoff valve located on the tank, accessible from behind the rear bumper.

It is recommended to close the tank shutoff valve when the vehicle is not in daily use. Further, it is recommended to close the shutoff valve when the vehicle is in travel.

The refrigerator should only be operated on 12 volt when the vehicle is in travel. See refrigerator Manufacturers Owner Manual for proper 12 volt operation.

APPLIANCES:

WARNING: It is not safe to use cooking appliances for space heating purposes due to the danger of asphyxiation.

WARNING: The propane stove needs fresh air for its safe operation.

Because the amount of air supply is limited by the size of your vehicle, before operating the propane stove, open the overhead vent or a window . Proper ventilation when using the propane stove will reduce the dangers of asphyxiation.

WARNING: Portable fuel burning equipment, including wood and charcoal grills and stoves, should not be used inside your vehicle. Use of this equipment inside your vehicle may cause fire or asphyxiation.

See appropriate component Manufacturer's Owner's Manuals for operating instructions.

REFUELING PROCEDURES:

WARNING: Do not refuel the propane tank to more than 80% of its capacity.

A properly refueled propane tank will hold approximately 80% of its volume in a liquid state. Over fueling of the propane tank can result in uncontrolled gas flow which can cause fire or explosion.

WARNING: The tank valve must be closed and **ALL PILOT LIGHTS, APPLIANCES, AND THEIR IGNITERS, (see Operating Instructions) SHALL BE TURNED OFF** during refueling of motor fuel tank and / or the propane tank. Only qualified personnel should refuel your propane tank.

REGULATOR:

The propane regulator is located adjacent to the propane tank.

This regulator has been installed under a protective cover to keep out debris, with the vent facing downward.

PROPANE LEAK DETECTOR:

Your vehicle has been equipped with a propane leak detection device for your protection, (see Picture F-P1, Popular model, see Picture F-P1A, Versatile model).

See "Floor Plan & Appliance Location" for location of the propane leak detector location.

Be sure the detector is operating while using your vehicle. **Do not block air circulation in the area where the propane leak detector is located.**

See Manufacturer's Owner's Manual for other operating instructions.

WARNING: Battery disconnect switch must be in the "ON" position for detector operation.



Picture F-P1:
Propane leak detector,
(Popular model).



Picture F-P1A:
Propane leak detector,
(Versatile model).

CARBON MONOXIDE LEAK DETECTOR:

Your vehicle is equipped with a carbon monoxide, (CO) leak detection device for your protection, (see Picture F-P2).

See "Floor Plan & Appliance Location" for location of the carbon monoxide gas leak detector location.

Be sure the detector is operating while using your vehicle. Do not block air circulation in the area where the carbon monoxide leak detector is located.

See Manufacturer's Owner's Manual for other operating instructions.

WARNING: Battery disconnect switch must be in the "ON" position for detector operation.



Picture F-P2: Carbon monoxide leak detector.

SMOKE DETECTOR:

Your vehicle is equipped with a smoke detection device for your protection, (see Picture F-P3, Popular model, see Picture F-P3A, Versatile model).

See "Floor Plan & Appliance Location" for the smoke detector location.

This device should be tested after each time your vehicle has been in storage, before each use, and at least once each week during your vehicle's use.

NOTE: Upon delivery of your vehicle from the factory, the detector has been rendered inoperative, due to the fact that the battery has been reversed to prevent drainage. Before operation, reverse the battery to the proper position and test the operation of the detector.

Be sure the detector is operating while using your vehicle. Do not block air circulation in the area where the smoke detector is located.

See Manufacturer's Owner's Manual for operating instructions.

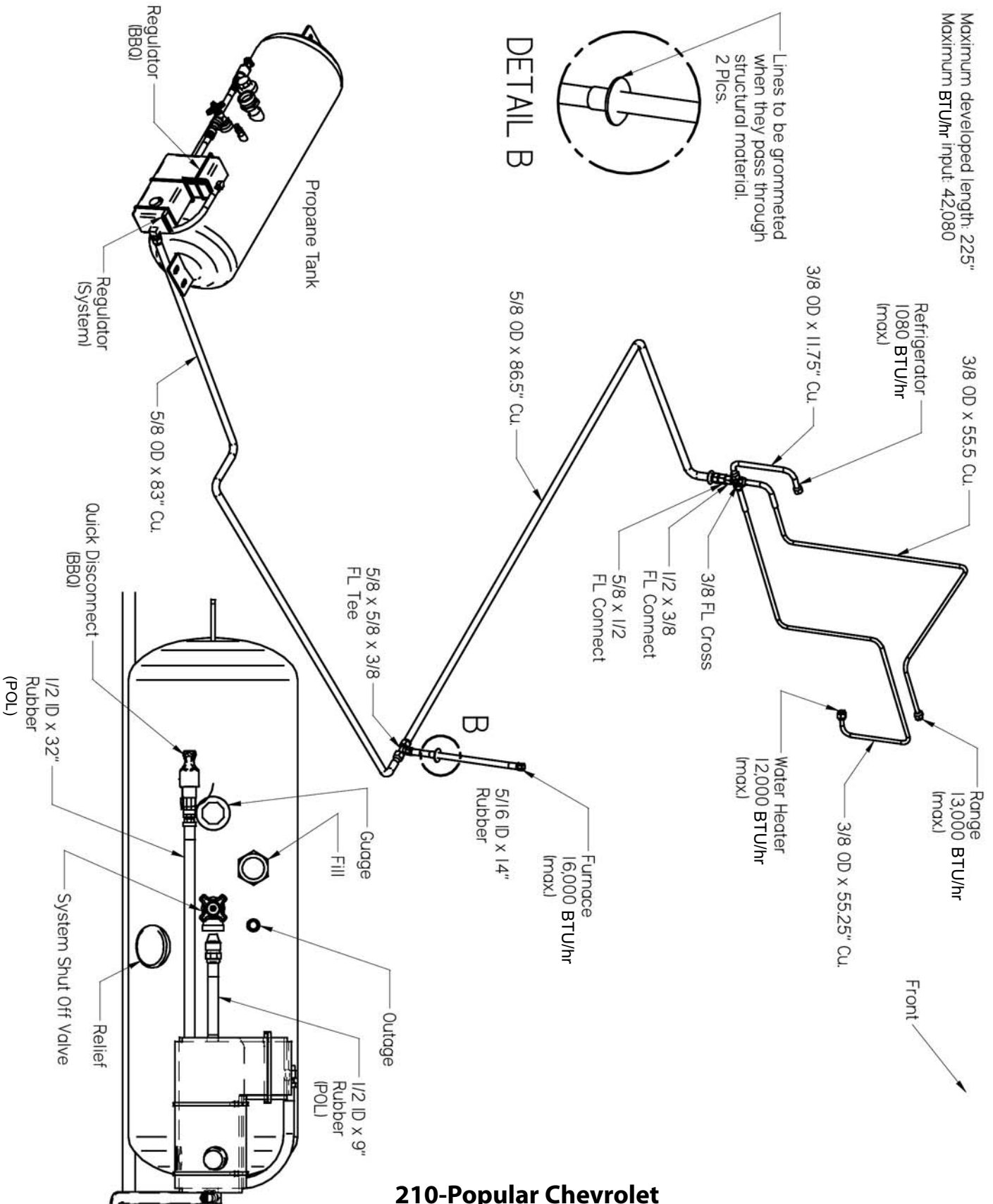
NOTE: Cleaning products may contaminate safety detectors. Detectors should be covered when using cleaning chemicals on the vehicles interior, (so that the sensors in the detection devices do not get contaminated).

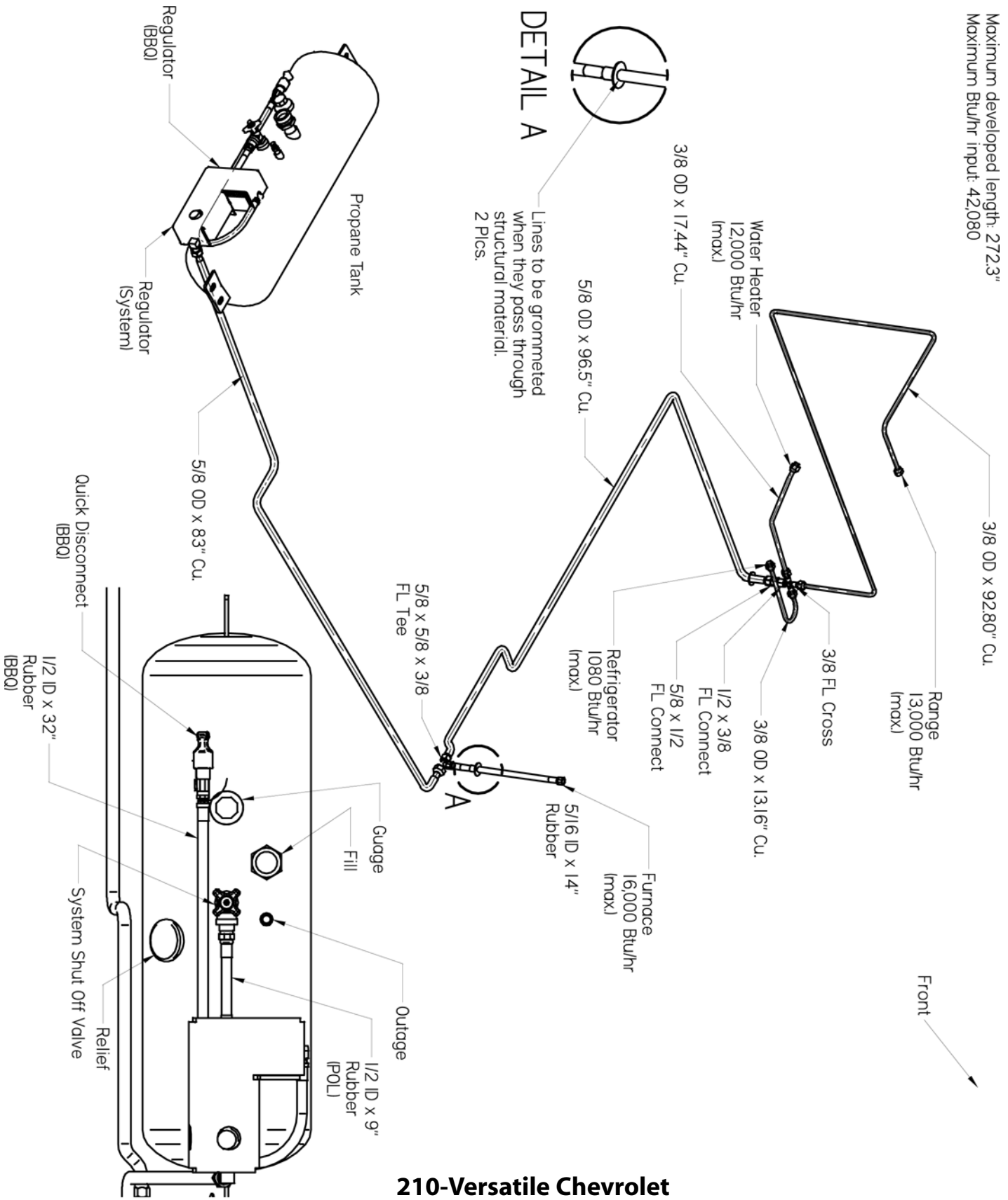


Picture F-P3:
Smoke detector,
(Popular model).



Picture F-P3A:
Smoke detector,
(Versatile model).





210-Versatile Chevrolet

Water and Waste Systems

WATER SYSTEM SUMMARY

Fresh water tank gravity fill:

Fresh water tanks can be filled individually using the gravity fills located at the driver side entry door and the right side rear door. Both tanks can also be filled using the rear fill if the interior tank drain valve located beside the water pump is open. (open is aligned with water line)

Filling water tanks with exterior city water connection:

Both fresh water tanks can be filled from the city water connection. You have the option to fill both tanks together or separately depending on the position of the inside valves.

1. Connect city water hose supply and open adjacent city water valve.
2. Interior tank drain valve in open position will fill both tanks. (open is aligned with water line)
3. If the interior tank drain valve is closed, the tanks can be filled separately. The tank selector valve (the one with the red handle) will allow this separate tank filling (valve position down toward driver side wheel, it will fill the exterior lower tank, valve in up position will fill the interior tank).

Use of city water connection:

1. Connect city water hose supply (keep the adjacent valve in closed, down position).
2. Selector and drain valve specific settings are not necessary for city water function.

Use of water pump (water tanks are now full):

1. External city water valve must be in down (closed) position.
2. With selector valve in down position toward driver wheel, water is drawn from the external lower tank, valve in up position, water is drawn from the interior tank.
3. The interior tank drain valve if open, will allow use of both tanks by pumping water from the lower, and the upper tank then draining into the lower. Keep the selector valve in the down position for this function.

Winter use:

1. The interior tank drain valve must be closed.
2. The directional valve must be in the up position.

WINTER MODE VALVE POSITIONS:

Tank selector valve must be in the interior tank position, (see Picture G-P1).

WINTER USE: (Moderate Subfreezing Conditions, -10°C (14°F)):

The dual tank system allows you to use the fresh water system under moderate subfreezing conditions by allowing you to isolate and drain the exterior fresh water tank.

During winter use:

- Use gravity fill for interior tank only.
- No outdoor shower.
- Waste water tanks are unprotected from freezing unless charged with antifreeze.
- Interior temp must be maintained above 65°F(18°C).
- Fridge must be turned ON.
- Exterior fresh tank must be drained.
- Exterior shower and city fill (See Picture G-P0) must be drained.



Picture G-P0: City water fill check valve.

To drain the city fill, depress the center of the check valve (Picture G-P0) with a finger or other blunt object to release the pressure and drain the water or antifreeze.

To prepare your motorhomes fresh water system for winter use you must do the following:

1. Ensure you first turn off the water pump, (switch is found on the monitor panel) before isolating and draining the exterior fresh water tank.
2. Switch tank selector valve to interior tank position, (see Picture G-P1).
3. Drain exterior fresh water tank by opening exterior drain valve, (see Picture B-P30A on page B-10).

SUMMER USE VALVE POSITION:

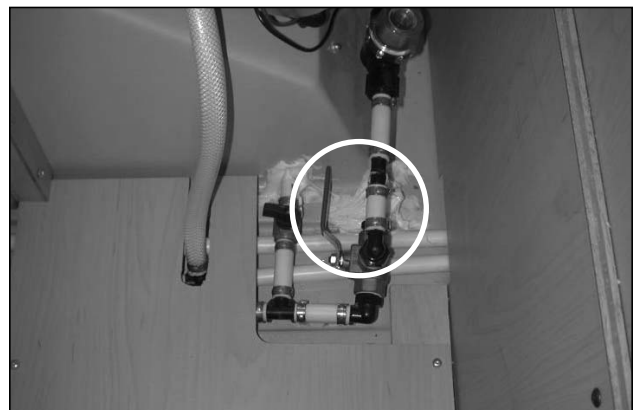
1. Tank selector valve must be in the exterior tank position, (see Picture G-P2).

SUMMER USE:

1. The dual tank system requires you to switch from the interior tank to the exterior tank position. This will allow you to utilize the full capacity of both fresh water holding tanks.
2. To utilize the interior tank and the exterior tank at the same time, you must open the interior fresh water tank drain and position the supply selector valve to the exterior or summer position, (see Picture G-P6 on page G3).



Picture G-P1: Selector valve position for supply from the interior fresh water tank.



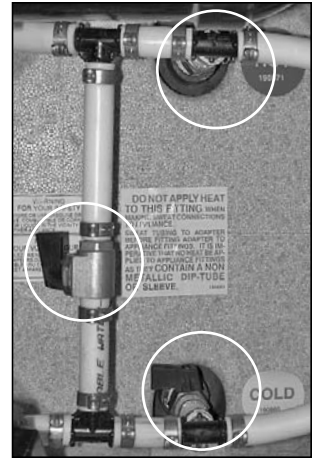
Picture G-P2: Selector valve position for supply from the exterior fresh water tank.

Your Roadtrek is equipped with a water heater by-pass valve. When it is in summer mode, all three valves will face the aisle, (see Picture G-P3). In winter mode, the water line valve is open and the valves at the water heater are closed, (see Picture G-P4).

NOTE: When the water system is operating in the winter mode, only the interior fresh water tank is to be used.

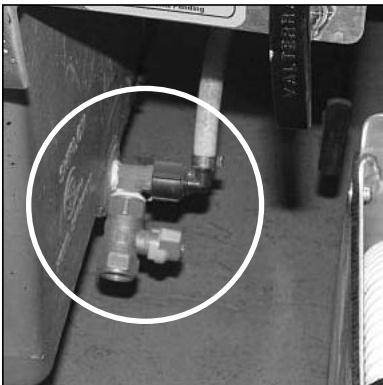


Picture G-P3: Summer mode valve positions.

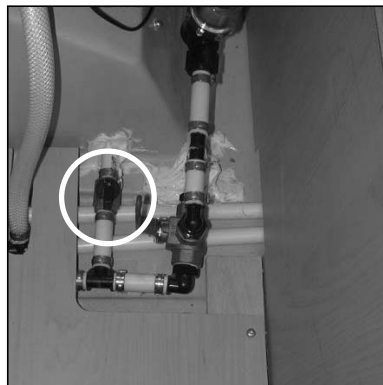


Picture G-P4: Winter mode valve positions.

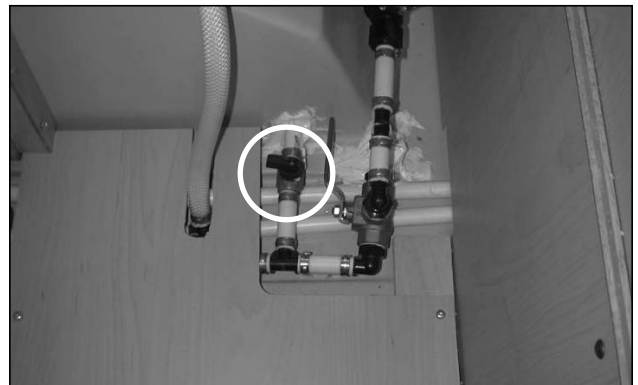
To drain the exterior fresh water tank you must open exterior drain valve at the low point drain located below the drivers side front storage drawer compartment, (see Picture G-P5).



Picture G-P5: Location of the exterior freshwater tank drain.



Picture G-P6: Interior tank drain valve in open position.



Picture G-P7: Interior tank drain valve in closed position.

TO DE-WINTERIZE:

Repeat the steps in reverse order.

NOTE: By using antifreeze in the black and grey waste water tanks, the waste water system can be used in moderate subfreezing conditions.

Although the waste and fresh water systems have been designed for use in moderate subfreezing conditions, Roadtrek Motorhomes makes no warranty what so ever for damage to the water systems as a result of freezing.

To prevent interior water lines from freezing, it is recommended that the interior temperature be maintained at +65°F (18°C) and the refrigerator left running.

FRESH WATER TANKS:

One tank is located in the vehicle’s interior, the other tank is located on the vehicle’s exterior. The purpose of the dual tank system is to provide a separate fresh water system that can be used in moderate sub freezing conditions.

The system can only function properly in either one of two modes. Summer use or winter use. All procedures to change operation modes must be followed for proper operation.

Your vehicle is equipped with a water system for either completely self contained or fully dependent use. It is **NOT** equipped with a pressure regulator to compensate for varying water pressure levels.

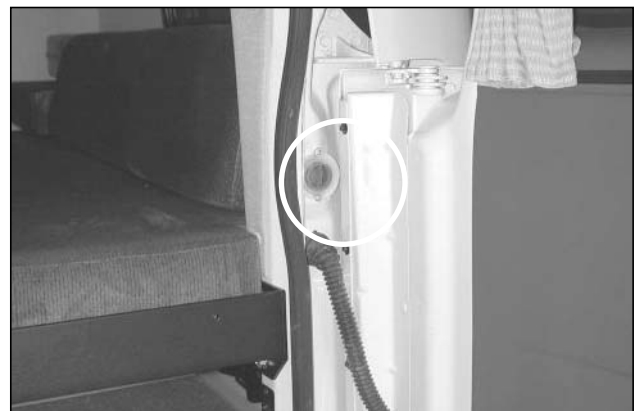
During self contained use, caution should be taken so as to minimize water consumption. For example, water consumption can be reduced while showering if you turn off the shower between wetting down and rinsing off.

To avoid damage due to road vibrations, be sure not to store heavy or sharp objects where they may come into contact with either the water lines or water pump. Also, allow sufficient room around the pump for proper operation.

FILLING THE INTERIOR FRESH WATER TANK:

The interior fresh water tank can be filled through the gravity fill located on the passenger side of the rear door opening, (see Picture G-P8). To fill the interior tank:

1. Open the rear passenger door.
2. Open the gravity fill cover by removing the orange plug, (see Picture G-P8).
3. Insert the hose and fill the tank using moderate pressure, (excessive pressure will result in a back flow of water).
4. When the tank is full, water will overflow back through the gravity fill hole.
5. Overfilled tanks will spill out through tank vents. This is evidenced by water dripping from the rear passenger side corner of van.



Picture G-P8 : The gravity fill for the interior fresh water tank, (located on passenger side rear door post).

FILLING THE EXTERIOR FRESH WATER TANK:

1. Open the front driver side door.
2. Open the gravity fill cover by removing the orange plug, (see Picture G-P9).
3. Insert the hose and fill the tank using moderate pressure, (excessive pressure will result in a back flow of water).
4. When the tank is full, water will overflow back through the gravity fill hole.
5. Overfilled tanks will spill out through tank vents. This is evidenced by water dripping from the underside of the van.

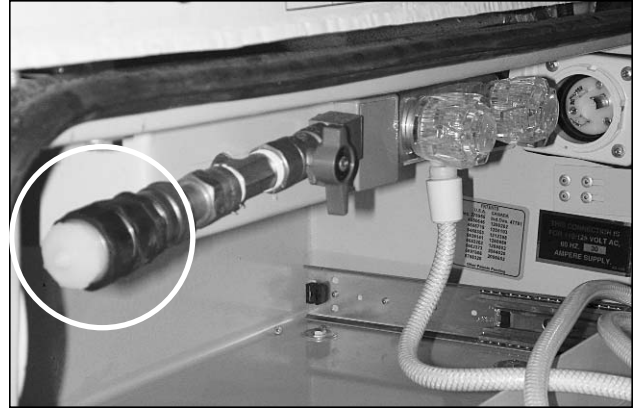


Picture G-P9 : The water fill for the external fresh water tank, (located at driver’s side front door post).

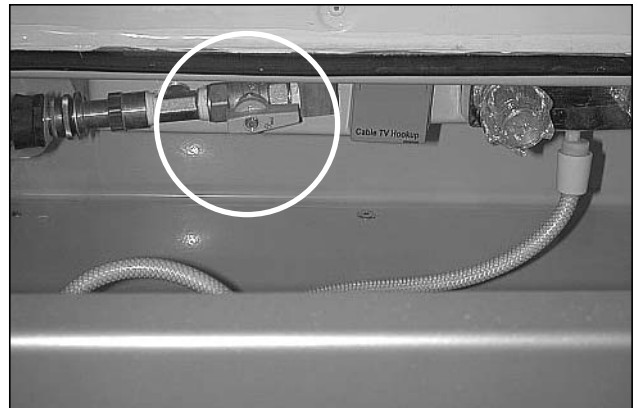
The fresh water tanks can also be filled through the city water inlet located behind the rear lockable driver side access drawer, for location, see the Daily Living section. The use of the city fill is not possible when in the winter operation mode.

To fill the tank:

1. Prior to using city fill, ensure water system is in summer use mode. Connect a hose to the city water inlet connection, (Picture G-P10). Remove the orange gravity fill plug for added venting of the fresh water tanks.
2. To fill the exterior fresh water tank, open the city water tank fill shut off valve, (see Picture G-P11).
3. Open the water source moderately.
4. When the tank is full, water will overflow in the same manner as when using the gravity fill, (see previous page).
5. To fill the interior fresh water tank, ensure the water system is in winter mode. Repeat steps 2-4.
6. Close the city water tank fill shut off valve, (see Picture G-P12).



Picture G-P10: Location of the city water inlet connection.



Picture G-P11: Open position of the city water tank fill valve.



Picture G-P12: Closed position of the city water tank fill valve.

CITY WATER CONNECTION:

NOTE: City water connection can only be used in summer operation mode.

The city water inlet connection is located in the small compartment behind the large lockable driver side storage compartment, (see Picture G-P10). To connect the water system to an outside source:

1. Ensure that the water pump is turned off.
2. Close the city water tank fill valve by turning the handle to the vertical position, (see Picture G-P12).
3. Be sure that all interior faucet's are closed to prevent spillage.
4. Open the city water source slowly to prevent excessive water force inside your vehicle. To protect your system from excessive pressure from water supply systems encountered in some areas, a water pressure regulator should be used. Such a regulator is not supplied with your vehicle.
5. Note that this connection by-passes the water pump and fresh water tank. Therefore, the use of these items is not necessary when connected directly to an external water source.

To disconnect the city water connection:

1. Turn off the external water source.
2. Open the sink faucet to relieve the pressure in the system, (failure to do so may result in an unexpected shower).
3. Ensure that the city water tank fill valve is closed, (see Picture G-P12).
4. Remove the hose from the city water connection, replace the cap on fill connection.

WASTE WATER STORAGE AND DUMPING SYSTEM:

Your vehicle is equipped with a waste water storage and dumping system that will provide adequate and effective storage and dumping of waste water. Your vehicle should be as level as possible to allow optimal operation of the system.

CAUTION: Ensure that both the black and grey water gate valves are closed, (inward position) before using the waste water system. This applies especially after extensive driving. Black and grey water dump valves are accessed through the driver side storage door, (see Picture G-P13).



Picture G-P13: Driver side storage door.

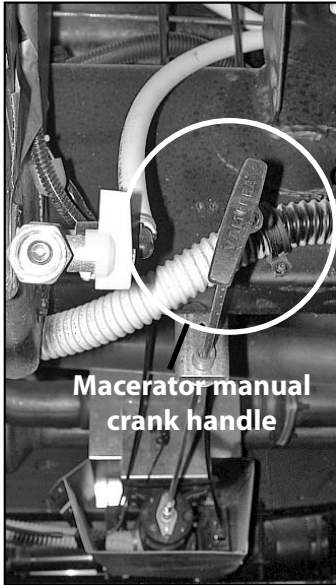
Waste Water Tank Preparation:

Your vehicle is equipped with two waste water tanks; the grey waste water tank is for waste water from the sink and aisle shower. The black waste water tank is for sewage from the toilet. Both tanks are equipped with separate dump valves so that each may be dumped independently. Before use of either waste tank, be sure to read instructions provided by the toilet manufacturer regarding waste water chemicals. We suggest that such chemicals be used every time to minimize odors and build up of solids on water level sensors inside the tanks.

CAUTION: During winter use under moderate subfreezing conditions, (refer to page G.1-G.3) antifreeze is required in the exterior black and grey waste water tank. Antifreeze should be used at a 50-50 ratio.



Picture G-P14: Access to sewer discharge assembly, black and grey gate valve handles.



Macerator manual crank handle

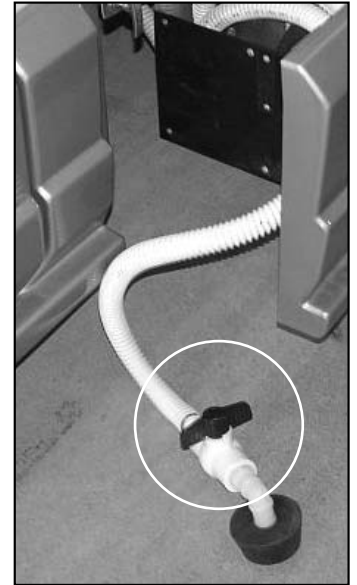
Picture G-P15: Macerator pump located under center of vehicle.



Picture G-P16: Macerator pump switch located on driver's door post.



Picture G-P17: Sewage discharge hose storage located in driver's side storage drawer.



Picture G-P18: Sewage hose discharge valve.

Waste Water Tank Dumping:

To dump the exterior black waste water tank:

1. Turn the battery disconnect switch to the "ON" position, if not already on, (located on the monitor panel).
2. Remove sewage discharge hose from storage, (see Picture G-P17).
3. Insert the discharge outlet into the waste receptacle.
4. Open the valve on the sewage hose, (see Picture G-P18) (NOTE: valve closed in picture).
5. Open the black water tank valve, (see Picture G-P14).
6. Open the driver's door, press and hold the macerator pump switch until the tank is empty, (see Picture G-P16).

To dump the grey waste water tank:

1. Open grey water tank valve.
2. Repeat step 6.
3. Close all valves.
4. Return sewage hose to its storage compartment.
5. Turn battery disconnect to the "OFF" position.

NOTICE: Do not operate the macerator pump "dry". It is recommended to always dump the black water tank first, then the grey water tank.

NOTE: If macerator should get clogged you will have to push and turn the manual macerator crank "T" handle to dislodge any debris that might be blocking the macerator, (see picture G-P15).

Waste Water Tank Flushing:

To flush the waste water tanks:

1. Ensure that both tanks are empty by checking the monitor panel.
2. Fill the black waste water tank by inserting a hose into the toilet, **(be sure to step on the flush pedal, so the flapper door stays open to prevent toilet overflow)** and fill the grey waste water tank using the sink.
3. Dump both tanks using the procedure outlined above.

Both waste water tanks can also be flushed using a similar procedure, but rather than filling each tank using the potable water system, they can be filled by inserting a hose directly into the sink and toilet.

OUTSIDE SHOWER:

NOTE: Outside shower can only be used in summer operation mode.

The outside shower faucet is found in the storage compartment behind the driver side rear wheel. Remove the shower hose from the storage compartment and attach to the faucet spout, (see Picture G-P19). The shower hose must be returned to the storage compartment before travel as to prevent damage to the unit.



Picture G-P19: Outside shower and shore power connection. Shower hose storage when Motorhome is parked.

POTABLE WATER SYSTEM DRAINING:

NOTE: Water system must be in summer operation mode.

To completely drain the fresh water system of all water:

1. Ensure that the water pump is off and that your vehicle is level.
2. Ensure that the interior tank valve is in the open position.
3. Drain the fresh water tank and the hot and cold fresh water system by opening the exterior fresh water drain valve at the low point drain, (see Picture G-P5 on page G-3).
4. Open all water outlets including the sink faucet, aisle shower faucet, external shower faucet, and toilet flushing pedal. The latter can be propped open or opened manually several times. This procedure allows gravity to draw any remaining water out through the tank drains.
5. Your vehicle is equipped with a water heater. Follow the manufacturer's instructions for draining.
6. Open the sink faucet and turn on the water pump until water is no longer pumped.
7. Turn off the water pump.

If this procedure is followed, it is unnecessary to blow out the water system. Once the system is drained, be sure to close all taps before driving.

NOTE: Do not allow water to remain in tanks when vehicle is not in use.

POTABLE WATER SYSTEM SANITIZING:

NOTE: Water system must be in summer operation mode.

Your potable water system should be sanitized if it is new, has not been used for a period of time, or may have become contaminated.

To sanitize your system:

1. Prepare a chlorine solution using 4 L, (1 gallon) of water and 60 ml, (1/4 cup) of household bleach, (5% sodium hypo chlorite solution).
2. With the fresh water tank empty, (see section on Waste Water Tank Flushing), pour, (see section on Filling Fresh Water Tank) 4 L, (1 gallon) of solution into the fresh water tank for each 60 L (15 gallon) of tank capacity. As an alternative, several commercial solutions are available and should be used as directed on the package.
3. Complete filling of the tank with fresh water.
4. Turn on the water pump and slowly open all faucet's to release trapped air.
5. Close faucet's and allow to stand for 3 hours then drain and flush with fresh potable water.
6. To remove excessive chlorine taste or odor which may remain, prepare a solution of 1 L, (1 quart) vinegar to 20 L, (5 gallons) water and pour into tank and allow solution to agitate in tank by vehicle motion, (several days if possible).
7. Drain tank and flush with fresh potable water.

WATER SYSTEM WINTERIZING:

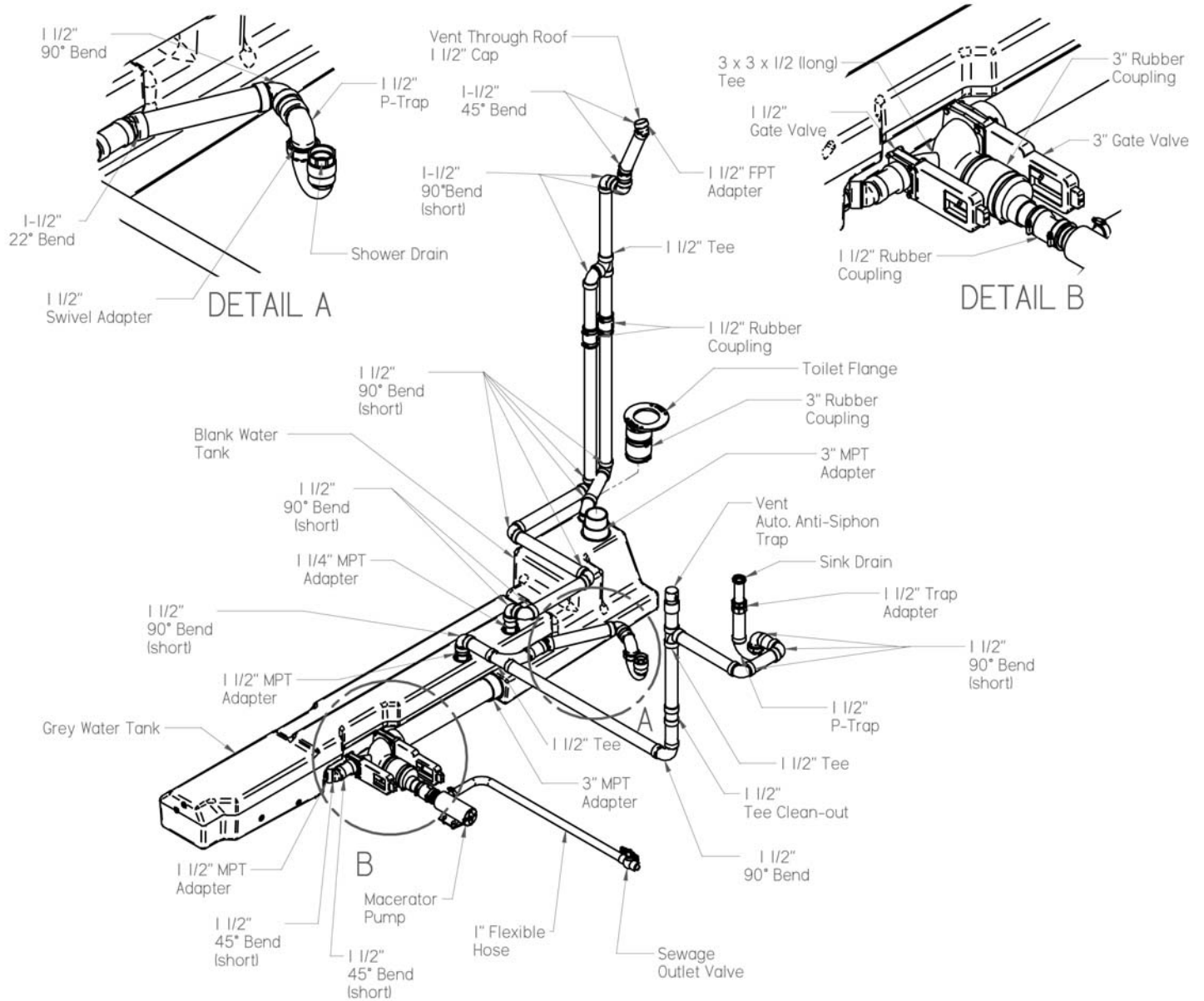
NOTE: Water system must be in summer operation mode and repeat operations 5 and 6 with water system in winter operation mode.

To winterize your potable water system:

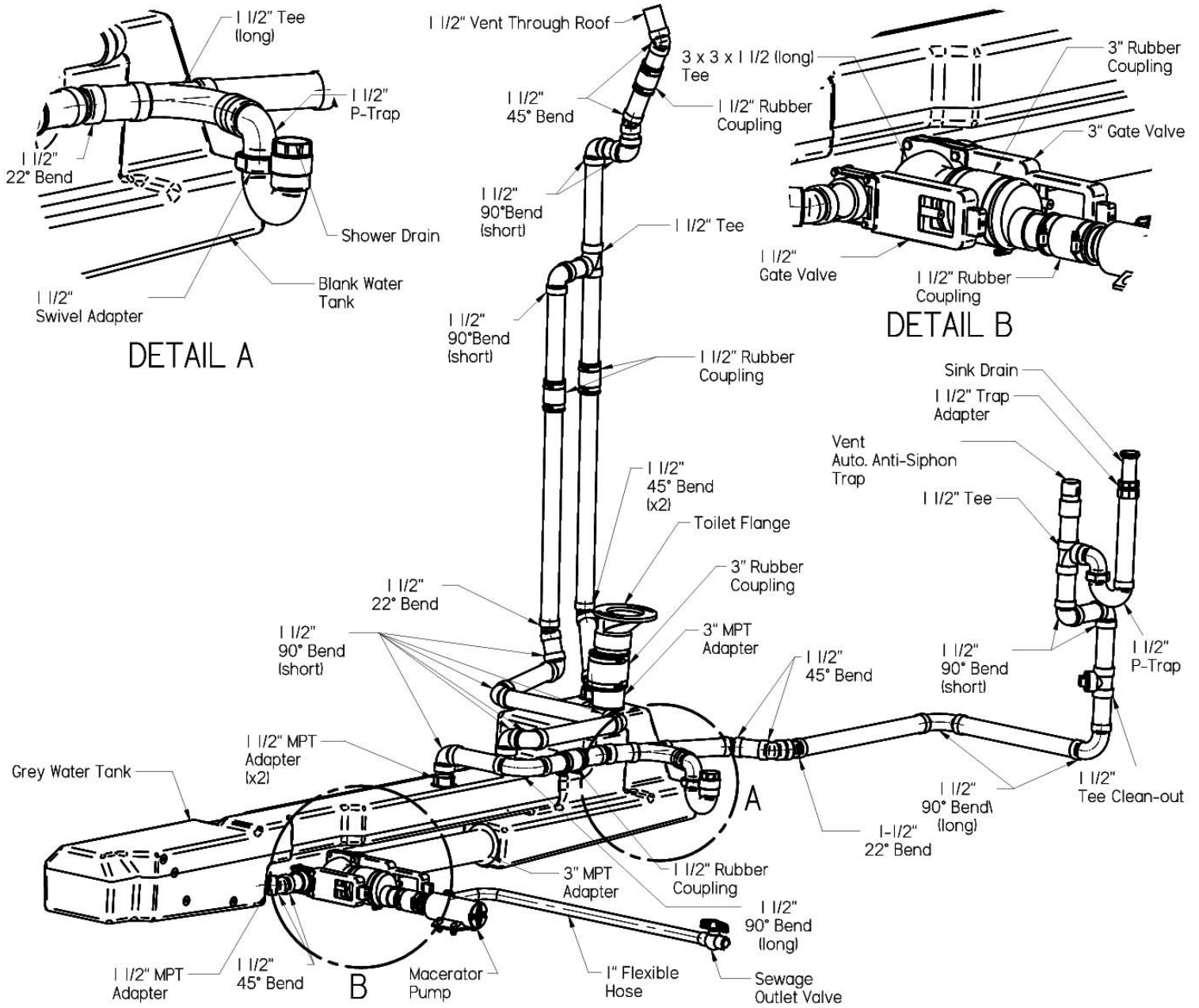
1. Drain the entire system including water heater, (refer to water heater manual for instructions on draining).
2. Place water heater by-pass in the by-pass position to prevent water heater from filling with antifreeze.
3. Add 8 L, (2 gallons) of approved nontoxic recreational vehicle antifreeze to the interior and exterior fresh water tanks using both gravity fills.
4. Turn on the water pump.
5. Open all three faucet's until antifreeze is visible.
6. Open the toilet valve until antifreeze is visible. Refer to the water system winterizing **NOTE** above.
7. Open the City Fill valve (See picture G-P11 on page G-5) for several seconds to let antifreeze through this portion of water lines. Then close valve again.
8. Turn off pump.
9. Remove the plug for the aisle shower drain and fill P-Trap with antifreeze.
10. Release pressure from City water inlet by pushing on the center plunger of the water connector (See Picture G-P0 on page G-2).

To prepare your potable water system for use:

1. Drain the antifreeze from the system.
2. Sanitize the system if desired.
3. Fill the system with water.



210-Popular Chevrolet



210-Versatile Chevrolet

Maintenance and Miscellaneous Information including Limited Warranty

Tire Fundamentals:

Federal law requires tire manufacturers to place standardized information on the sidewall of all tires. This information identifies and describes the fundamental characteristics of the tire and also provides a tire identification number for safety standard certification and in case of a recall. See diagram H-P1 for an example.

P

The "P" indicates the tire is for passenger vehicles.

Next number

This three-digit number gives the width in millimeters of the tire from sidewall edge to sidewall edge. In general the larger the number, the wider the tire.

Next number

This two-digit number, known as the aspect ratio, gives the tire's ratio of height to width. Numbers of 70 or lower indicate a short sidewall for improved steering response and better overall handling on dry pavement.

R

The "R" stands for radial. Radial ply construction of tires has been the industry standard for the past 20 years.

Next number

This two-digit number is the wheel or rim diameter in inches. If you change your wheel size, you will have to purchase new tires to match the new wheel diameter.

Next number

This two- or three-digit number is the tire's load index. It is a measurement of how much weight each tire can support. You may find this information in your owner's manual. If not, contact a local tire dealer. Note: You may not find this information on all tires because it is not required by law.

M+S

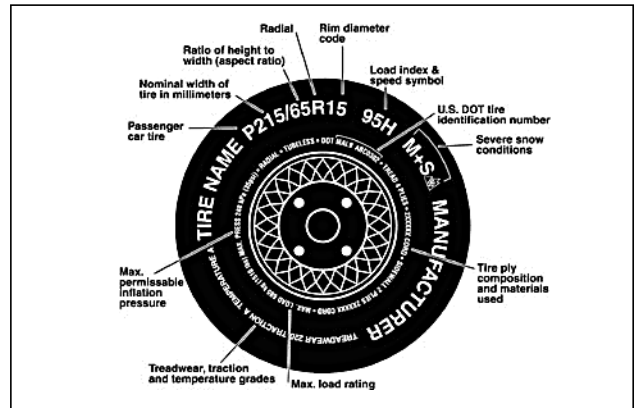
The "M+S" or "M/S" indicates that the tire has some mud and snow capability. Most radial tires have these markings; hence, they have some mud and snow capability.

Speed Rating

The speed rating denotes the speed at which a tire is designed to be driven for extended periods of time. The ratings range from 99 miles per hour (mph)(Q) to 186 mph(Y or ZR). Note: You may not find this information on all tires because it is not required by law.

U.S. DOT Tire Identification Number

This begins with the letters "DOT" and indicates that the tire meets all federal standards. The next two numbers or letters are the plant code where it was manufactured, and the last four numbers represent the week and year the tire was built. For example, the numbers 3197 means the 31st week of 1997. The other numbers are marketing codes used at the manufacturer's discretion. This information is used to contact consumers if a tire defect requires a recall.



Picture H-P1: Information on passenger vehicle tires

Tire Ply Composition and Materials Used

The number of plies indicates the number of layers of rubber-coated fabric in the tire. In general, the greater the number of plies, the more weight a tire can support. Tire manufacturers also must indicate the materials in the tire, which include steel, nylon, polyester, and others.

Maximum Load Rating

This number indicates the maximum load in kilograms and pounds that can be carried by the tire.

Maximum Permissible Inflation Pressure

This number is the greatest amount of air pressure that should ever be put in the tire under normal driving conditions.

UTQGS Information

Tread Wear Number

This number indicates the tire's wear rate. The higher the tread wear number is, the longer it should take for the tread to wear down. For example, a tire graded 400 should last twice as long as a tire graded 200. See diagram H-P2 for an example.

Traction Letter

This letter indicates a tire's ability to stop on wet pavement. A higher graded tire should allow you to stop your car on wet roads in a shorter distance than a tire with a lower grade. Traction is graded from highest to lowest as "AA", "A", "B", and "C".

Temperature Letter

This letter indicates a tire's resistance to heat. The temperature grade is for a tire that is inflated properly and not overloaded. Excessive speed, under inflation or excessive loading, either separately or in combination, can cause heat build-up and possible tire failure. From highest to lowest, a tire's resistance to heat is graded as "A", "B", or "C".

LT

The "LT" indicates the tire is for light trucks.

Max. Load Single kg(lbs) at kPa(psi) Cold

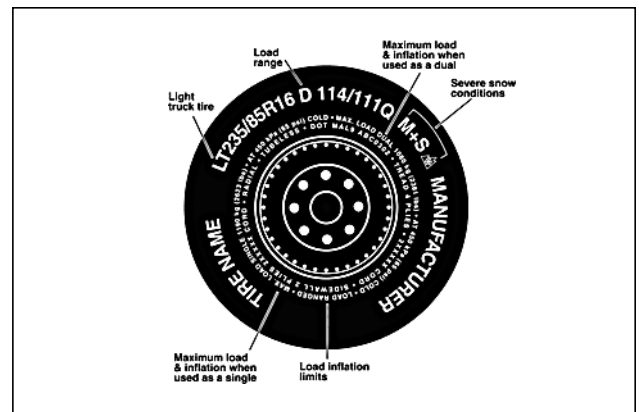
This information indicates the maximum load and tire pressure when the tire is used as a single.

Load Range

This information identifies the tire's load-carrying capabilities and its inflation limits.

Snow Tires

In some heavy snow areas, local governments may require true snow tires, those with very deeply cut tread. These tires should only be used in pairs or placed on all four wheels. Make sure you purchase snow tires that are the same size and construction type as the other tires on your vehicle.



Picture H-P2: Additional Information on Light Truck Tires

ROADTREK TIPS - ONAN MICROLITE GENERATORS FROM BEN SPENGEN, SERVICE, WARRANTY AND PARTS MANAGER

Here are a few helpful hints to ensure satisfactory performance of your Onan MicroLite generator.

The main 12 volt battery switch at the monitor panel must be in the on position before generator start up. This will ensure ongoing charge to the auxiliary battery. Be aware, the fuel pick up for the generator is set at the ¼ level (approximate) of your gasoline tank. Your generator should provide adequate power for operating the AC and microwave oven at the same time, provided the AC is started first.

The generator must be exercised (operate under load by running the AC) for at least 2 hours monthly. Lack of exercise can cause moisture build up and fuel system damage (varnishing) that make the generator run poorly. If you frequently travel at high altitudes or in extreme temperatures, be aware that your generator can lose power in low density air caused by such conditions. Gasoline generators can be adjusted for high altitude by Onan certified service dealers. It's a good practice to check the oil frequently, or every 8 hours of operating time since the engine can shut down with improper oil levels. Do not check the oil level when the generator is running.

The propane fueled generator (Roadtrek RS Adventurous model) does not have the same exercising demand or altitude adjustment. Avoid starting the generator while the vehicle engine is running. This (DC) load could trip the fuse in the auto battery circuit if charge demand is high. For propane fuel supply, always open the supply valve at the tank slowly to prevent the safety shut off from being activated.

Onan has an official handbook which details generator operation, maintenance and trouble shooting, safety precautions, winter storage and more. These handbooks are available at Onan certified service dealers or see www.funroads.com.

INVERTER/BATTERY SUMMARY NOTES AND TROUBLE SHOOTING:

- Ensure the main 12 volt switch is in the on position prior to connecting unit to shore power.
- The 750 watt inverter itself uses about 1.25 amps to operate. When dry camping turn off the inverter to conserve battery power. Turn off the main 12 volt switch when the vehicle is not in use for a period of time.
- Ensure the inverter is in the auto position and all dip switches are correctly configured. (see inverter manual)
- Inverter will shut down if battery voltage drops below 10.5 amps. (approximate)
- Check all circuit breakers are on at the distribution panel.
- The inverter is equipped with indicator lights. This allows the user to tell at a glance if operational problems exist. See the inverter operation manual for details
- Inverter will supply 110 volt AC to the galley and AV cabinet receptacles. This output is limited to about 7 amps which will operate small appliances only.
- The coffee maker current draw is near the inverter output limit, thus the appliance cannot be used without revising the dip switch settings.
- Dim or fluttering 12 volt interior lights is usually indicative of low battery power. Start the vehicle engine. If the lights are bright while the battery is being charged through the automotive side, this confirms a low battery.

WINTERIZING

- Drain fresh water tank(s) and empty waste tanks.
- Drain the water heater by removing the anode rod. You will need a 1-1/16" wrench (see water heater operating/instruction manual). The water pump should be turned off and the sink faucet opened to relieve pressure before removing anode.
- Set the valves at the water heater to the by-pass position (at right angle to water lines).
- The "middle valve" should be turned in line with the tubing.
- Add 2 gallons of non-toxic RV approved antifreeze to the fresh water tank through the gravity fill. If your Roadtrek has two tanks, add one gallon to each tank.
- Turn the water pump on and allow to prime.
- Open the hot and cold service to each interior faucet separately. Open the valve at the shower hose. Open the toilet valve. Observe the antifreeze flow through all fixtures, then close each fixture. Ensure antifreeze flows into all P-traps (sink, lavatory, and shower). You may also consider adding antifreeze from the container jug to the shower floor-pan trap.
- Open the grey and black waste tank valves and operate the macerator pump for about 20 seconds. (for Roadtreks so equipped)
- Again open all interior faucets, hoses and toilet valve and operate water pump.
- Operate macerator briefly to drain waste tanks.
- Briefly open city water diverter valve, then close.
- Open the outside shower hot and cold faucet and pump antifreeze through shower hose if attached.
- Turn pump off and open a faucet to release back pressure. From outside, ensure antifreeze is present at the city water fill by opening the backflow prevention valve (a pen or a screw driver tip will do to push valve pin).

Reminder, to prepare your Roadtrek for spring and summer use, ensure all fresh water tanks are drained and sanitized.

FIBERGLASS MAINTENANCE:

To maintain the original appearance and finish, your vehicle's fiberglass running boards, roof and/or body must be waxed at least annually. Refer to the Chevrolet owners manual for paint finish maintenance.

EXTERIOR WASHING:

To prevent water from entering your vehicle, avoid spraying water directly into exterior vents or grills. Use care and caution when using a power washer to prevent water leaks. Do not point power washer directly towards any door openings, body seams, vent or automotive striping.

OTHER MAINTENANCE:

For necessary maintenance of other components and appliances, see their respective manufacturer's owner's manuals for instructions.

WINTER STORAGE:

INSIDE YOUR VEHICLE:

Before winter storage:

1. Be sure to clean your vehicle thoroughly. Special emphasis should be given to the appliances, such as the refrigerator.
2. Once cleaned, leave the refrigerator door propped open with the cutting board in the freezer compartment to prevent the development of odors, (insert a box of baking soda if desired).
3. Open a window slightly allowing sufficient air circulation to avoid the development of odors, condensation and mildew.
4. To prevent sun rays from deteriorating and fading interior fabrics, cover all upholstered seats and cushions. As a further precaution, close all drapes tightly.
5. Disconnect the auxiliary battery using the disconnect switch located in the monitor panel.

OUTSIDE YOUR VEHICLE:

Before winter storage:

1. Ensure that all waste water tanks have been dumped and flushed and that the entire potable water system has been properly drained, refer to sections on Potable Water System Draining and Potable Water System Winterizing.
2. Be sure to cover the external vents to the refrigerator, exhaust fan, furnace and air conditioner with heavy plastic sheeting to prevent entry by birds, rodents and insects.
3. To improve tire life and maintain performance, put your vehicle up on blocks. Also, cover all tires exposed to sun light to prevent deterioration from ultraviolet rays.
4. Consult your automotive owner's manual or local automotive dealer regarding steps necessary to prevent engine and chassis damage during long periods of storage in your particular region.
5. Vehicle should be parked level so that all vents and water drains can operate properly.

SPRING START UP:

After storage, reactivate your vehicle for use by reversing all the procedures that you performed to prepare it for winter storage. In addition, propane system's connections and fittings should be checked for possible leaks and all other systems and appliances should be operated to ensure satisfactory performance.

TIRES:

See the automotive chassis manufacturer's owner's manual and documents for tire warranty and recommended inflation pressures.

CARGO CARRYING CAPACITY:

See the information labels attached to the driver door post, inside of lower galley cabinet door (on some models), and insert at the front of this manual.

OWNER MAINTENANCE CHECKS:

Listed below are vehicle maintenance checks and inspections that should be performed by the owner or qualified service technician at the indicated intervals.

Any adverse conditions should be brought to the attention of your dealer or qualified service technician for expert service advice as soon as possible.

The owner maintenance checks are generally not covered by warranties and you may be charged for labor, parts and supplies used.

WHEN YOU STOP FOR FUEL:

Extinguish all pilot lights, (e.g. refrigerator, furnace).

Check engine oil level.

Look for low or under inflated tires, the tires should be 50 P.S.I. in the front tires and 80 P.S.I. in the rear tires.

AT LEAST MONTHLY:

Check coolant level in the coolant recovery reservoir.

Check operation of all exterior lamps, including brake lamps, turn signals and hazard warning flashers.

Check tire pressure.

Run generator for 20 minutes under load to prevent carburetor damage.

AT LEAST ONCE EVERY THREE MONTHS:

Flush black water holding tank.

Flush grey water holding tank.

Add fuel stabilizer to the fuel tank.

Flush and sanitize fresh water tank.

Grease external drawer slides.

AT LEAST TWICE A YEAR:

- Check power steering fluid level.
- Check windshield washer level and wiper operation. Clean wiper blades with clean cloth dampened with washer fluid.
- Check radiator, heater and air-conditioning hose for leaks or damage.
- Check for worn tires and loose wheel lug nuts.
- Check parking brake system.
- Check head lamp alignment.
- Check lap and shoulder belts for wear and function.
- Check air pressure in spare tire.
- Inspect appliance vents to ensure they are free from dirt, insects, spider webs and/or nests.
- Inspect black and grey water tank vents.
- Clean air conditioner filter.

AT LEAST ONCE A YEAR:

- Lubricate all door hinges, locks and latches.
- Clean battery terminals, (automotive and coach).
- Have propane test completed by certified gas technician.
- Have appliances tested and cleaned.
- Wax & polish and protect exterior surfaces.

The above maintenance schedule is a recommendation only. Please refer to your Chevrolet Manual for details on the Chevrolet required maintenance schedule.

Efficient economical vehicle performance will be enhanced by utilizing this recommended maintenance. It is strongly recommended that no repairs be made without appropriate training, tools and safety equipment. This could cause bodily injury, damage to the vehicle or cause the vehicle to operate improperly.

Roadtrek Motorhomes shall not be held liable or assume any obligations or responsibilities whatsoever for any loss, damage or injury directly or indirectly caused by, arising or resulting from, or as a consequence of the use or nonuse of the information contained herein or the operation or non-operation of any items mentioned herein. Roadtrek Motorhomes shall be indemnified and saved from all losses, expenses, claims and demands whatsoever.

AUXILIARY BATTERY:

Your vehicle is equipped with a group 27 lead acid auxiliary battery. Dual battery option is equipped with two 6 volt deep cycle batteries (connected in series). It is recommended that acid levels be checked at least once every 3 months, every 1 month under heavy usage.

See battery manufacturers maintenance recommendations.

In order to maintain the function of the slide out battery tray you must lubricate the slides and compartment bottom. Use of a general automotive grease is recommended. It is recommended that this be done every 3 months when you are checking the acid levels.

ALUMINUM WHEEL MAINTENANCE:

Never clean your wheels when they are hot either from free standing in the sun, or from normal road use.

Always clean wheels when they are cool to the touch of your hand. If you spray any type of cleaning agent, corrosive or not, they will stain a polished and chrome wheel and even some clear coated wheels. Period.

No matter how expensive they are.

Clean your wheels either early in summer mornings or dusk on summer evenings. A good practice is not to clean them in direct sunlight. We are experiencing different UV and ambient temperatures, from a result of a changing ozone. This also plays havoc on tires as well.

Clean rims using mild soap and water. Some strong cleaning agents will spot polished wheels every time.

Avoid car washes if possible when your wheels are hot. This could stain the wheel.

In time, due to brake dust and regional temperatures in North America, the wheel's lustre will fade, so from time to time, use a premium wheel cleaner/polish to keep the natural polished finish.

Never use steel wool or coarse abrasive pads to clean ANY wheel. This will cause permanent damage, and will not be warranted by the wheel manufacturer.

It is recommended to place Vaseline, or some type of oil based cooking grease and coat the wheels during the harsh winter and touch them up from time to time or have a set of winter wheels and tires.

LIMITED WARRANTY DEFINITIONS

Roadtrek Motorhomes Inc. (A Division of HANMAR MOTOR CORPORATION).

Dealer	Dealer or any wholesale buyer of recreational vehicles, authorized by Roadtrek Motorhomes .
Vehicle	Any recreational vehicle manufactured by Roadtrek Motorhomes .
Purchaser	Registered owner of the Vehicle and/or purchaser of the Vehicle .
Warranty Card	Roadtrek Motorhomes Limited Warranty Registration Card specifying Purchaser of Vehicle .

All vehicles are covered by a three part limited warranty: Automotive Warranty, Appliance Warranty, and Roadtrek Motorhomes Limited Motorhome Warranty.

ROADTREK MOTORHOMES INC. LIMITED WARRANTY REGISTRATION CARD

It is very important that the Dealer complete the Roadtrek Motorhomes Inc. Limited Warranty Registration, (at the bottom of the "QualityCare" Pre-Delivery Report) on each Vehicle and fax it to Roadtrek within 48 hours from the date of retail delivery. Roadtrek Motorhomes uses the information on the Limited Warranty Registration to:

1. Notify General Motors to start the automotive, (chassis) warranty in the Purchaser's name as of the date of retail delivery.
2. Maintain records for the Roadtrek Motorhomes Limited Motorhome Warranty and for any recall notifications.

If Roadtrek Motorhomes does not receive this information, when the Purchaser tries to have automotive warranty work done, the Purchaser, the Dealer and Roadtrek Motorhomes will be severely inconvenienced until this information is received and processed by General Motors.

AUTOMOTIVE WARRANTY - GENERAL MOTORS (CHEVROLET CHASSIS)

The warranty currently offered by General Motors covers the manufacture of the Chevrolet chassis. See the General Motors Warranty Information booklet for details.

For Chevrolet chassis sold through **RV dealers**, Roadtrek Motorhomes uses the information on the completed Warranty Card to notify General Motors to **restart the automotive, (chassis) warranty** in the Purchaser's name as of the date of retail delivery. Upon receipt of the Warranty Card, Roadtrek Motorhomes completes and mails the appropriate forms to General Motors who in turn enter this information into their computer systems. This process can take up to 6 weeks from when the Dealer mails the Warranty Card. If warranty work is required before this process is completed and the Vehicle's V.I.N. appears on the computer, the Purchaser should ask the Chevrolet dealer to enter the Purchaser's name and address and date of retail delivery into the computer. To prove the vehicle is still under warranty, the Purchaser should show a copy of the bill of sale to the Chevrolet dealer.

If Roadtrek Motorhomes does not receive the completed Warranty Card, when the Purchaser tries to have automotive warranty work done, the Purchaser, the Dealer and Roadtrek Motorhomes will be inconvenienced until this information is received and processed by General Motors.

AUTOMOTIVE WARRANTY - GENERAL MOTORS (CHEVROLET CHASSIS)

For Chevrolet chassis sold through **Chevrolet dealers**, the Dealer will enter the appropriate information directly into General Motors' computer system to **restart the automotive, (chassis) warranty** in the Purchaser's name as of the date of retail delivery.

All automotive service, maintenance and repairs are to be performed by any Chevrolet dealer. See the General Motors Warranty Information booklet for details. Such items are not warranted by Roadtrek Motorhomes. **Roadtrek Motorhomes will pay for the removal and reinstallation of motorhome components necessary to perform automotive recalls and warranty** for 36 months or 36,000 miles, (in US) or 60,000 Km, (in Canada), which ever occurs first, from date of purchase by the first Purchaser. After this period such costs are considered to be inherent in the ownership of such a vehicle. **Roadtrek Motorhomes will not pay for the removal and reinstallation of motorhome components necessary to perform automotive service or maintenance.** Such costs are considered to be inherent in the ownership of such a vehicle.

LIMITED WARRANTY INFORMATION

The following information must be provided when contacting the factory for warranty:

Selling Roadtrek Motorhomes Dealer: _____

Address: _____ Phone: (____) _____

City, State/Prov: _____ Zip/Postal Code: _____

V.I.N.(last 8 digits): _____ Sales order #, (Located On The Driver Door Post Label): _____

Date Of Delivery To Owner, (Retail Purchaser): _____

AUTOMOTIVE CUSTOMER SERVICE & ROADSIDE ASSISTANCE NUMBERS

Chevrolet, (US) customer service	800-222-1020
Chevrolet, (US) roadside assistance	800-CHEV-USA, (243-8872)
GM Canada customer service	800-263-3777
GM Canada roadside assistance	800-268-6800

APPLIANCE WARRANTY

The following are not warranted by Roadtrek Motorhomes, but are covered by individual warranties offered by their respective manufacturers to which terms both Purchaser and Dealer must comply: air conditioner, electrical inverter/charger, furnace, generator, microwave oven, range hood exhaust fan, refrigerator, stove, toilet, water pump, water heater, and macerator. Roadtrek Motorhomes makes no warranty whatsoever, regarding these items and/or such like components manufactured by others. However, Roadtrek Motorhomes will pay for the removal and reinstallation of such components that it determines at its sole discretion are installed by Roadtrek Motorhomes in a manner unusual to the industry. **Purchaser and/or Dealer are required to deal directly with the nearest service center for such manufactured components** and abide by the warranty policy as allowed by such component manufacturers. The name, location and phone number of some such component manufacturer's are as follows:

ROADTREK MOTORHOMES LIMITED MOTORHOME WARRANTY:

Roadtrek Motorhomes warrants to the Purchaser that the Vehicle is free from defects in material and workmanship on the portion manufactured by Roadtrek Motorhomes, under normal use and service, for **four, (4) years or 48,000 miles, (U.S.) or 80,000 Km, (Canadian)** whichever occurs first, from date of purchase by the first Purchaser or the date the Vehicle was first put into service (for example, as a demo or rental), whichever is earlier.

This warranty shall be fulfilled at a Roadtrek Motorhomes Dealer or authorized Roadtrek repair facility. For in transit emergency repairs, you may choose to deal with a non-authorized RV service facility. However **all warranty repairs at non-authorized RV service facilities** must be preauthorized by Roadtrek Motorhomes. Roadtrek Motorhomes will, at its option, replace or repair free of charge, (including related labor) any defective part, about which the Purchaser shall notify their Roadtrek Dealer within the warranty period. The obligation of Roadtrek Motorhomes under this warranty, is expressly limited to such replacement or repair.

The provisions of this limited warranty shall not apply to the following:

1. Accident.
2. Unauthorized repairs, modifications, or alterations.
3. Normal maintenance.
4. Changes made to other units manufactured after this Vehicle was manufactured.
5. Incidental damages connected with the failure of the Vehicle such as lost time, inconvenience, loss of use of the Vehicle, cost of rental cars, gasoline, telephone, travel or lodging.
6. Damages caused by environmental factors including, but not limited to, hailstorms, tornadoes, sandstorms, lightning, floods, earthquakes, airborne fallout, chemicals, tree sap, ocean spray, road hazards.
7. Vehicle that has been declared a total loss by an insurance company (demolished) or a Vehicle whose title indicates that it is designated as "salvage," "junk," or "rebuilt" or words of similar impact.
8. Exterior side storage compartments may not be moisture free. It is advised that you store items accordingly. Roadtrek Motorhomes is not responsible for goods damaged while stored in exterior storage compartments.
9. There will be no allowance for emergency road repair, towing, labor, meals accommodations, etc. Such will not be accepted if claimed under warranty.
10. After the "QualityCare" Pre-Delivery Report is completed by the dealer, appliance adjustments, door latch adjustments, light bulbs, fuses, battery in the smoke detector and window screens are warranted for 90 days.
11. Aluminum wheels are not warranted against corrosion that is a result of road salt, sea salt, cleaning chemicals or harsh driving conditions.

ROADTREK MOTORHOMES LIMITED MOTORHOME WARRANTY:

The provisions of this limited warranty shall not apply to deterioration due to wear and exposure beyond the following limitations:

1. For **one, (1) year** or 12,000 miles, (in US) or 20,000 Km, (in Canada), which ever occurs first, from date of purchase by the first Purchaser for sewage hose, curtain fabric, seating fabric, carpet, cup holders, exterior stripes and decals, running board trim, and black and grey water tank valves.
2. For **two, (2) years** or 24,000 miles, (in US) or 40,000 Km, (in Canada), which ever occurs first, from the date of purchase by the first Purchaser for leather seats.
3. For **three, (3) years** or 36,000 miles, (in US) or 60,000 Km, (in Canada), which ever occurs first, from date of purchase by the first Purchaser for exterior painted surfaces.

Roadtrek Motorhomes Limited Motorhome Warranty is void unless the following conditions are adhered to:

1. Warranty Card on Vehicle must be completed by the Dealer and faxed to Roadtrek within 48 hours of date of retail delivery. When warranty applications are made and Warranty Card is not on file at Roadtrek,, reimbursement of claim will be delayed until proof of original purchase is submitted to Roadtrek.
2. All warranty claims must be submitted on a Roadtrek Motorhomes Warranty Claim form and properly completed including Vehicle Identification Number, (V.I.N.), odometer reading and Roadtrek Motorhomes Limited Motorhome Warranty start date, (date of retail delivery).
3. **Warranty work that will exceed \$200 must first be authorized by Roadtrek** before proceeding with such work. The authorization number issued by Roadtrek Motorhomes must be noted on the warranty claim.
4. Roadtrek reserves the right to inspect defective parts that have been replaced under warranty. Dealer is expected to hold selected parts for a period of not to exceed 60 days.
5. Only parts and accessories and other material, available through Roadtrek Motorhomes are to be used in the performance of warranty service.
6. Warranty repairs performed a second time by a Dealer, (due to incorrect or inadequate diagnosis, improper assembly or repair, or lack of proper testing when the original warranty repair was performed) are considered as shop comebacks and are not reimbursable. Costs of such repairs must be absorbed by the Dealer.
7. All claims must be submitted within 30 days of the date of repair.
8. Purchasers are responsible for presenting their vehicle to a Roadtrek Dealer as soon as a problem exists. The warranty repairs should be completed in a reasonable amount of time from date of authorization.

This limited warranty is expressly in lieu of any other expressed or implied warranty, including any implied warranty of merchantability or fitness for a particular purpose and of any other obligations or liabilities on Roadtrek Motorhomes which neither assumes nor authorizes any other person to assume for it any other liability in connection with Vehicle manufactured by it.

REPORTING SAFETY DEFECTS (U.S. ONLY)

If you believe that your vehicle has a defect which could cause a crash or could cause injury or death, you should immediately inform the National Highway Traffic Safety Administration, (NHTSA) in addition to notifying Home & Park Motorhomes.

If NHTSA receives similar complaints, it may open an investigation, and if it finds that a safety defect exists in a group of vehicles, it may order a recall and remedy campaign. However, NHTSA cannot become involved in individual problems between you, your dealer, or Roadtrek Motorhomes.

To contact NHTSA, you may call the Auto Safety Hotline toll-free at 1-888-327-4236, (or 366-0123 in Washington, DC area) or write to:

NHTSA
U.S. Department of Transportation
Washington, DC 20590

You can also obtain other information about motor vehicle safety from the Hotline.

ROADTREK AMBASSADOR POTENTIAL CUSTOMER REFERRAL PROGRAM FOR ROADTREK OWNERS:

Most Roadtrek owners spend a lot of their valuable time giving tours of their Roadtreks to numerous inquisitive people. Many of these potential customers become Roadtrek owners. To reward their efforts and encourage more "tours" by these very convincing "sales people," we will pay a \$100.00 commission and provide incentive rewards to any Roadtrek owner who refers a potential customer to us who eventually purchases a new Roadtrek.

To participate in this program, the Roadtrek owner must sign up for the Roadtrek Ambassador program by visiting www.roadtrek.com/ambassador or calling 1-888-ROADTREK, (762-3873). For every potential customer that you show your Roadtrek, complete a "Potential Customer Referral Card". You will receive \$100.00 for each referral that purchases a new Roadtrek. In addition, we have these complimentary gifts:

1. For your 1st purchasing customer we will send you Two Roadtrek Ambassador Golf Shirts.
2. For your 2nd purchasing customer we will send you Two Roadtrek Ambassador Windbreakers.
3. For your 5th purchasing customer we will send you Two Roadtrek Ambassador Leather & Melton jackets.
4. For your 10th purchasing customer we will provide an all expense paid trip to the Roadtrek factory.

If these incentives weren't enough, all Roadtrek Ambassadors referring more than 2 purchasing customers in a given year will be eligible for a draw to win the use of a new Roadtrek for a full year, (mileage restrictions will apply).

This program is subject to the following conditions:

1. Roadtrek receives a "Potential Customer Referral Card", (supplies available upon request) completed and mailed by the potential customer and/or Roadtrek owner.
2. The potential customer purchases a new Roadtrek within 3 years from the date the "Potential Customer Referral Card" is received by Roadtrek.
3. The potential customer purchases a new Roadtrek and has the dealer complete the "Roadtrek Warranty Registration" in the same name and address that was inserted on the "Potential Customer Referral Card".
4. If more than one Roadtrek owner refers the same potential customer, the \$100.00 commission will be split equally among all of the referring Roadtrek owners.

Roadtrek Motorhomes reserves the right to cancel this program based upon 90 days notice to Roadtrek owners.

ROADTREK CLUB INTERNATIONAL

As a new Roadtrek owner, you are cordially invited to join our family of Roadtrek owners as members of the "Roadtrek Club International". An owners' club offers its members an opportunity to meet other people with common interests, attend enjoyable gatherings, (such as group outings, sight seeing, camping, suppers, factory tours, and more!), share travel experiences, keep current on the latest information and products from the factory, and exchange ideas for improvements or solutions to problems. Annual membership dues are only US\$10. Their common bond is the that they are all Roadtrek owners. As a group, they promote fellowship and enrich their way of life.

Roadtrek Club International is an active Chapter of the Family Motor Coach Association. FMCA, the foremost organization in the world composed exclusively for motorhome owners, was founded in 1963 for the express purpose of promoting fellowship and the use of motor coaching for pleasure. Many of its 130,000 members meet and form fast friendships with fellow motorhomers and join together in Association sponsored activities that are interesting and fun.

FMCA offers benefits and services specially designed to meet the needs of motorhome owners that you can't get anywhere else. Although space does not permit listing everything available, member benefits include: free monthly subscription to the full color Family Motor Coaching magazine, minimum cost motorhome insurance, accidental death coverage, emergency road service, trip routing service, toll free 800 number message service, mail forwarding, identification emblems for your motorhome, free membership directory, anti-theft program, discount programs, national and regional conventions, caravans and tours, and year-round activities in nearly 300 chapters of FMCA for fun, fellowship and entertainment... plus much more. FMCA dues are \$35 per year plus a one time \$10 initiation fee in the first year.

Just complete the applications on the next page and mail them with your checks to the addresses shown. You'll be glad you did!

ADDRESS, PHONE & FACSIMILE NUMBERS, AND E-MAIL

Address all inquiries to: Roadtrek Motorhomes Inc.
Warranty & Service Department
100 Shirley Avenue
Kitchener, Ontario, Canada, N2B 2E1
Telephone: toll free 888-ROADTREK, (762-3873) or 519-745-1169
Facsimile: 519-745-1160
E-mail: service@roadtrek.com

All inquiries must include: Owner's name, address, home and work phone numbers
Selling Roadtrek dealer's name and contact
Servicing Chevrolet dealer's name, contact and phone number,
(if applicable)
Last 8 digits of Vehicle Identification Number, (V.I.N.)
Vehicle mileage
Date of Retail Delivery

WEBSITE

Checkout the Roadtrek website at www.roadtrek.com

ROADTREK INTERNATIONAL CHAPTER FMCA A ROADTREK OWNERS' CLUB

Please Print _____ MEMBERSHIP APPLICATION Date _____

Last Name _____ First Name _____ Spouse _____

Address _____ City _____ Prov/State _____

Country _____ Postal/ZIP Code _____ Phone: () _____

FMCA# _____ If you are not currently a member of the Family Motor Coach Association, please complete the FMCA Membership Application Form below. **WE CANNOT PROCESS YOUR ROADTREK INTERNATIONAL CHAPTER APPLICATION UNTIL YOU ARE AN FMCA MEMBER.** Mail both forms and checks in separate envelopes today. FMCA members send only the Roadtrek application form and check.

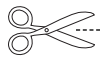
I/We would be interested in helping run the Chapter. _____ Yes _____ No

I/We would be interested in serving as an elected officer. _____ Yes _____ No

Please enclose \$10.00 in U.S. funds. Note: The Chapter cannot accept credit cards.

Make check or money order payable to "Roadtrek International".

Mail application and fee to: Becky Hartley, Chapter Treasurer, Email: johnbeckyhartley@sbcglobal.net
231 W. Washington St. Nelsonville, OH 45764-1138 Telephone: (740) 753-1066



[Cut and mail in separate envelopes]

FAMILY MOTOR COACH ASSOCIATION

Please Print _____ MEMBERSHIP APPLICATION Date _____

Last Name _____ First Name _____ Spouse _____

Address _____ City _____ Prov/State _____

Country _____ Postal/ZIP Code _____ Phone: () _____

E-mail Address _____ Coach Manufacturer: Roadtrek Motorhomes

Model: _____ Roadtrek Year: _____ Length: _____ License Plate Number: _____

I have applied for membership in the **Roadtrek International Chapter** of the Family Motor Coach Association.

() If you are a former member, check here.

Occupation or former occupation, if retired.

How did you hear about FMCA?

If referred by an FMCA member, please list his/her name and member number

I enclose \$45, (payable in U.S. funds) for a Full/Family membership (includes membership identification emblems.). The \$45 is composed of a \$10 initiation fee, \$30 for one year's membership fee, and \$5 for a one-year subscription to *Family Motor Coaching* magazine. I understand that upon acceptance of my application, I will be sent a copy of the FMCA Code of Ethics. I agree to read and abide by this code, which represents all our endeavors to be good neighbors, careful and responsible coach owners and operators, and good citizens of our communities.

Signed: _____

Make check or money order payable to: FMCA, Inc.

Please charge my

Mastercard VISA Discover American Express

Card # _____ Exp. Date _____

Signature. If charged, must sign here.



Return application and fees to: FMCA Membership Chairman, 8291 Clough Pike, Cincinnati, OH 45244-2796. Telephone (513) 474-3622



CHANGE OF OWNER NAME OR ADDRESS FORM

IMPORTANT - To owner with New Address or Used-Vehicle Buyer -
complete and mail for accuracy of recall mailing records.

PLEASE TYPE OR PRINT LEGIBLY:

1. VEHICLE IDENTIFICATION NUMBER (17 character number found on top left of instrument panel)										
2. PRINT Last Name (including Jr., Sr., etc.)										
3. PRINT First Name (or Initial) and Middle Name (or Initial)										
4. PRINT NEW mailing Address: House/Building Number and Street Name (including St., Ave., Rd., Ct., etc.)										
Apt./Suite No.		or	P.O. Box No.			or <input type="checkbox"/> RR/ <input type="checkbox"/> HCR (check one)		<input type="checkbox"/> RR/ <input type="checkbox"/> HCR Box No.		
City				State		ZIP Code		ZIP + 4		
Area Code			Phone No.			Prov.		Postal Code		
Current Date		Month	Day	Year		Email Address				




Form 2, February 1999
M190204



**AFFIX
STAMP**

 **Roadtrek**TM
100 SHIRLEY AVENUE
KITCHENER, ONTARIO
N2B 2E1



POTENTIAL CUSTOMER REFERRAL CARD

PLEASE TYPE OR PRINT LEGIBLY:

PRINT **Potential Customer Name** (including Jr., Sr., etc.)

PRINT **Mailing Address:** House/Building Number and Street Name (including St., Ave., Rd., Ct., etc.)

City State/Prov. ZIP/P.C.

Country Email

Please send me a brochure and the name and address of my nearest dealer

Area Code Phone No.

REFERRED BY:

Roadtrek Vehicle Identification Number (last 8 digits only) Area Code

Phone No.

PRINT **Roadtrek Owner's Name** (including Jr., Sr., etc.)

Optional


PRINT **Mailing Address:** House/Building Number and Street Name (including St., Ave., Rd., Ct., etc.)


City State/Prov. ZIP/P.C.

Email

Please send me more of these referral cards

Please send me more brochures

 **Roadtrek**™ by Roadtrek Motorhomes M300404



POTENTIAL CUSTOMER REFERRAL CARD

PLEASE TYPE OR PRINT LEGIBLY:

PRINT **Potential Customer Name** (including Jr., Sr., etc.)

PRINT **Mailing Address:** House/Building Number and Street Name (including St., Ave., Rd., Ct., etc.)

City State/Prov. ZIP/P.C.

Country Email

Please send me a brochure and the name and address of my nearest dealer

Area Code Phone No.

REFERRED BY:

Roadtrek Vehicle Identification Number (last 8 digits only) Area Code

Phone No.

PRINT **Roadtrek Owner's Name** (including Jr., Sr., etc.)

Optional


PRINT **Mailing Address:** House/Building Number and Street Name (including St., Ave., Rd., Ct., etc.)

City State/Prov. ZIP/P.C.

Email


Please send me more of these referral cards

Please send me more brochures

 **Roadtrek**™ by Roadtrek Motorhomes M300404



**AFFIX
STAMP**


100 SHIRLEY AVENUE
KITCHENER, ONTARIO
N2B 2E1



**AFFIX
STAMP**


100 SHIRLEY AVENUE
KITCHENER, ONTARIO
N2B 2E1

Please contact Roadtrek Motorhomes should you require additional customer referral cards.



Division of HANMAR MOTOR CORPORATION
100 Shirley Avenue, Kitchener, Ontario,
Canada, N2B 2E1
Telephone: 519-745-1169
or Toll Free 1-888-ROADTREK (1-888-762-3873)
Telefacsimile: 519-745-1160
Email: service@roadtrek.com
WebSite: <http://www.roadtrek.com/LIT>

Printed In Canada

Copyright © Hanmar Motor Corporation

Release Date: December 2006

Doc No: 21906532 **Rev:** 05

™ © "Home & Park" and "Roadtrek" are registered trademarks of J.J. Hanemaayer of which Hanmar Motor Corporation is a licensee and/or registered user